

SonoScape

All Great in One



Premium Portable  
Ultrasound



**SonoScape**

SonoScape Medical Corp.

2F, 12<sup>th</sup> Building, Shenzhen Software Park Phase II, Keji Middle 2<sup>nd</sup> Road,  
Nanshan District, Shenzhen 518057, Guangdong, China  
Tel: +86-755-26722890 Fax: +86-755-26722850  
Email: market@sonoscape.net www.sonoscape.com

© 2024 SonoScape Medical Corp.  
All rights are reserved.

SonoScape Medical reserves the right to change the  
above information and discontinue any product at any  
time without prior notification and will not be liable for any  
consequences resulting from the use of this publication.

U-X1120241108

DEO



Introducing X11, SonoScape's first portable ultrasound built on the powerful C-Field™ platform. Equipped with advanced diagnostic capabilities and intelligent scanning assistants, X11 is designed to transform bedside care, providing doctors with the tools they need for accurate and efficient diagnosis. X11 redefines portability in high-end ultrasound, delivering an unparalleled experience for traditional bedside applications.

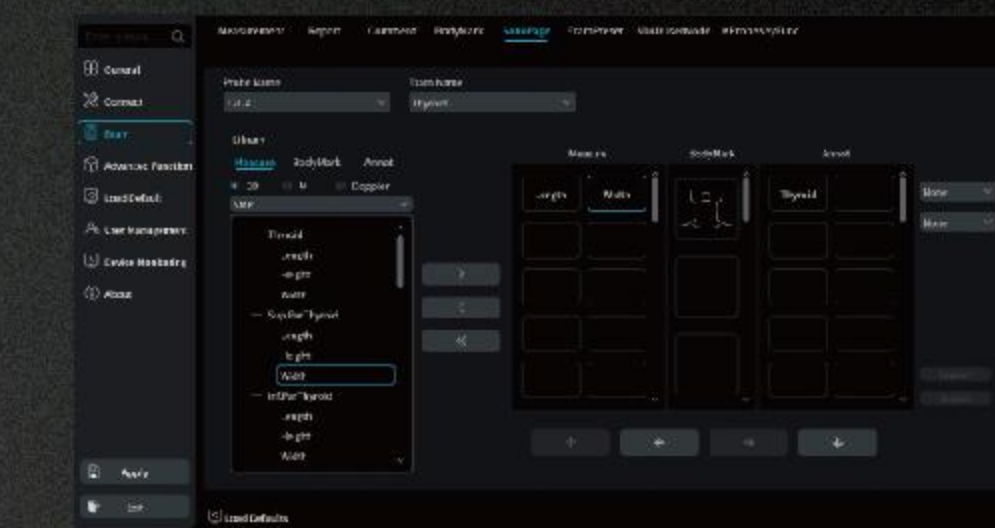
## SMART CONNECTION, STREAMLINED WORKFLOW

The X11 laptop ultrasound is equipped with a range of powerful efficiency tools designed to enhance daily workflows for healthcare professionals. By streamlining tasks and saving valuable time, it empowers doctors with a truly convenient and user-friendly ultrasound system. With the X11, experience advanced technology that supports faster, more accurate diagnostics - all at your fingertips.



### Auto Wakeup

Offers seamless convenience by automatically activating the probe and entering the default preset when the probe is lifted from its frozen state.



### SonoPage

Integrates measurements, bodymarks, and annotations into one page. Streamlined interface for focused diagnostics.



### SonoAssistant

Increases standardization and scanning efficiency. Supports user-defined protocols.



### SonoHelp

Covers a variety of applications, serving as a useful reference for less-experienced clinicians.



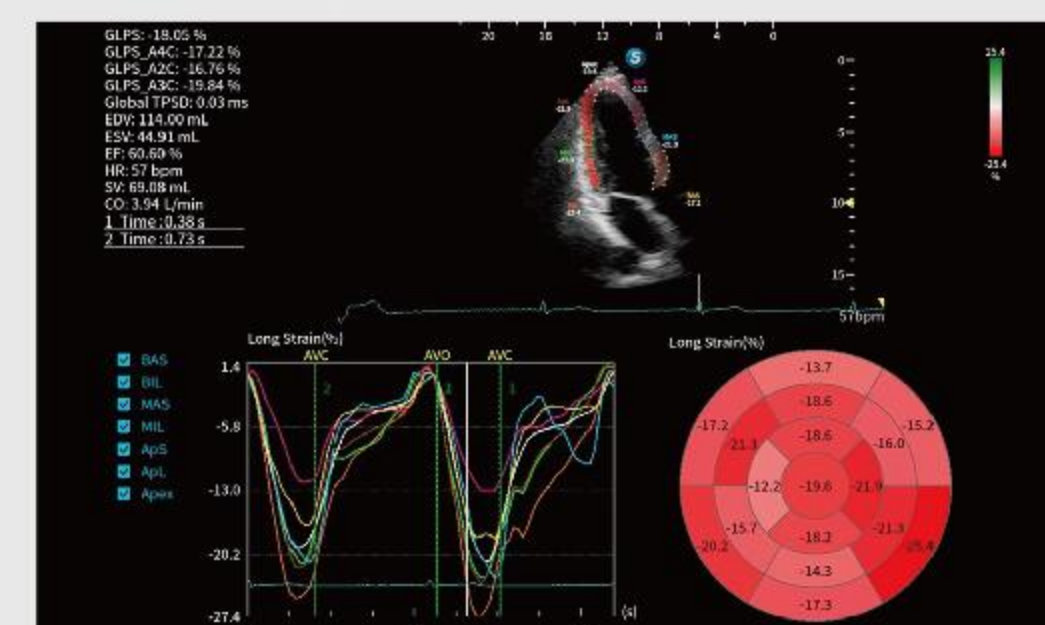
# BEYOND LIMIT BEYOND EXPECTATION

The X11 is equipped with a range of advanced, intelligent features designed to assist healthcare professionals in their diagnostic process. By leveraging cutting-edge technology, this system aims to enhance diagnostic accuracy, improve workflow efficiency, and reduce the risks associated with diagnosis. The integration of these innovative applications not only supports doctors in making explicit decisions but also streamlines their daily tasks, ultimately contributing to better patient care.



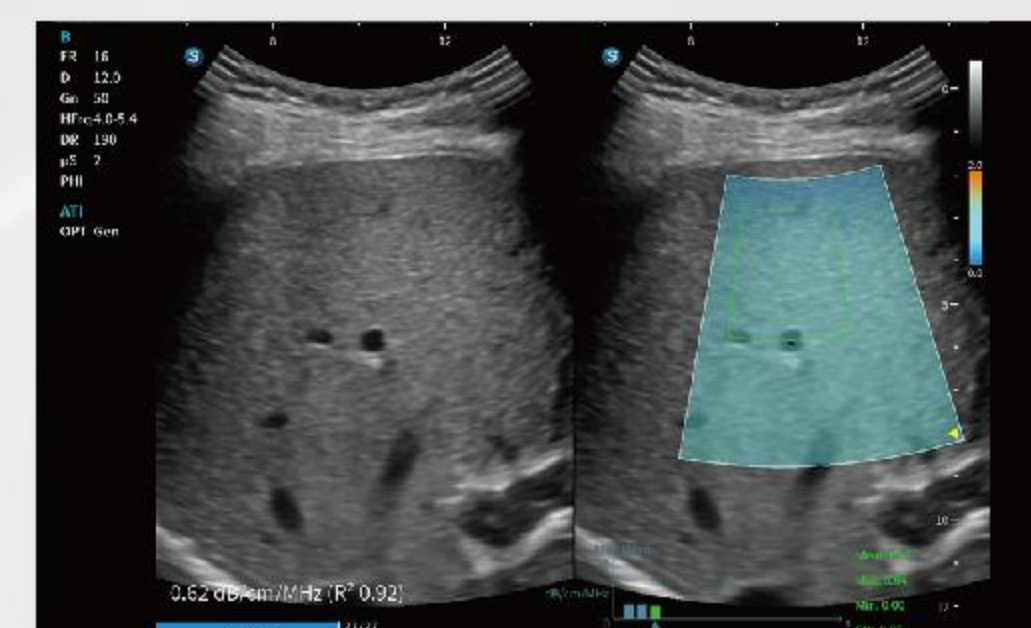
## G-MQA

G-MQA supports the analysis of myocardial motion across multiple views, such as the A4C view, and generates analysis curves for parameters including strain, strain rate, velocity, displacement, etc.



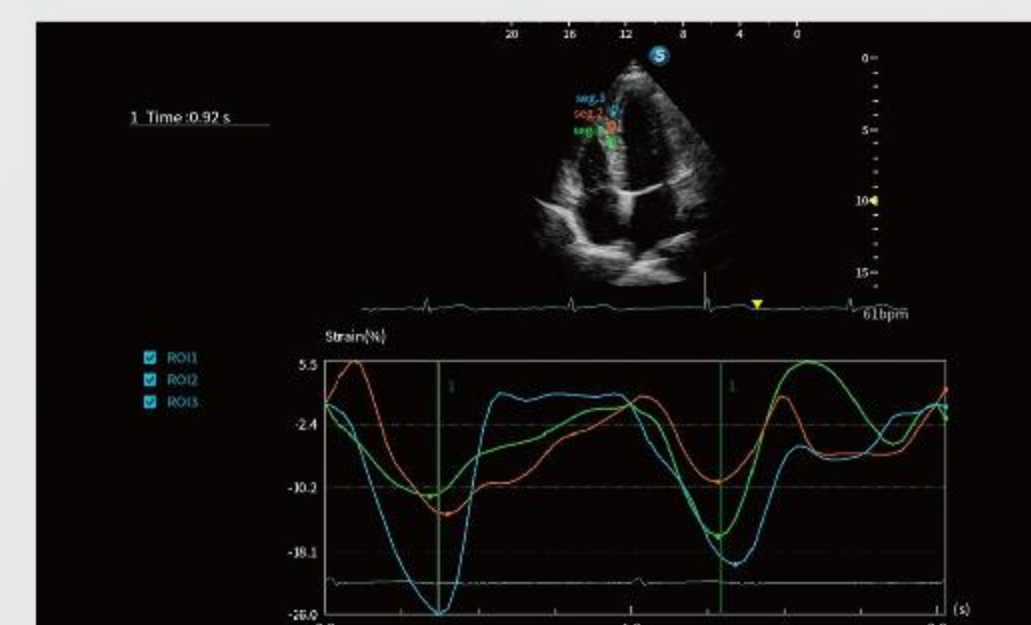
## ATI

ATI measures the attenuation index across multiple liver tissue sites to quantitatively assess liver attenuation, aiding in the diagnosis of fatty liver.



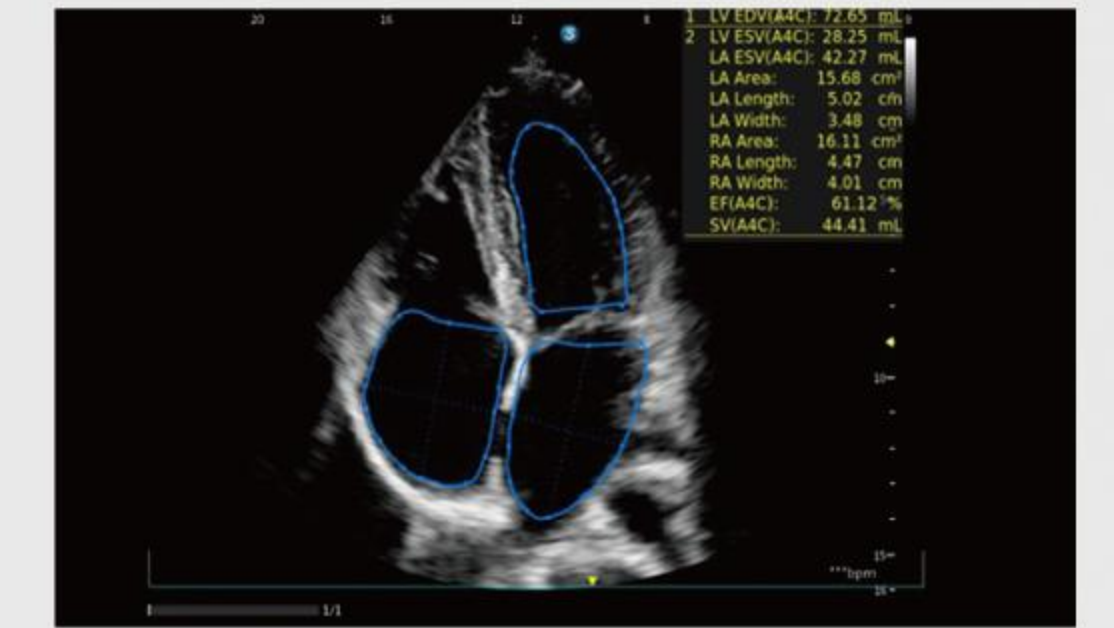
## R-MQA

R-MQA supports to analyze 20 heart segments and outputs analysis curves of strain, strain rate, velocity, displacement, etc.



## S-CV (meas.)

S-CV (meas.) supports automatic recognition of cardiac sections, including PLAX, A4C, and IVC view. After selecting the measurement phase, it automatically displays results, allowing rapid assessment of LV systolic function (EF, SV), LV diastolic function (LAVI), RV systolic function (FAC), and RV diastolic function (IVC CI). This functionality enhances clinical efficiency and accuracy in cardiac evaluations.



## S-CV

S-CV supports real-time scanning with automatic identification of cardiac structure. It can recognize up to 8 anatomical landmarks and facilitate automated measurements in various modes such as PW mode, M mode, and TDI mode. This capability enables rapid and efficient cardiac function assessment, streamlining the evaluation process for healthcare professionals.

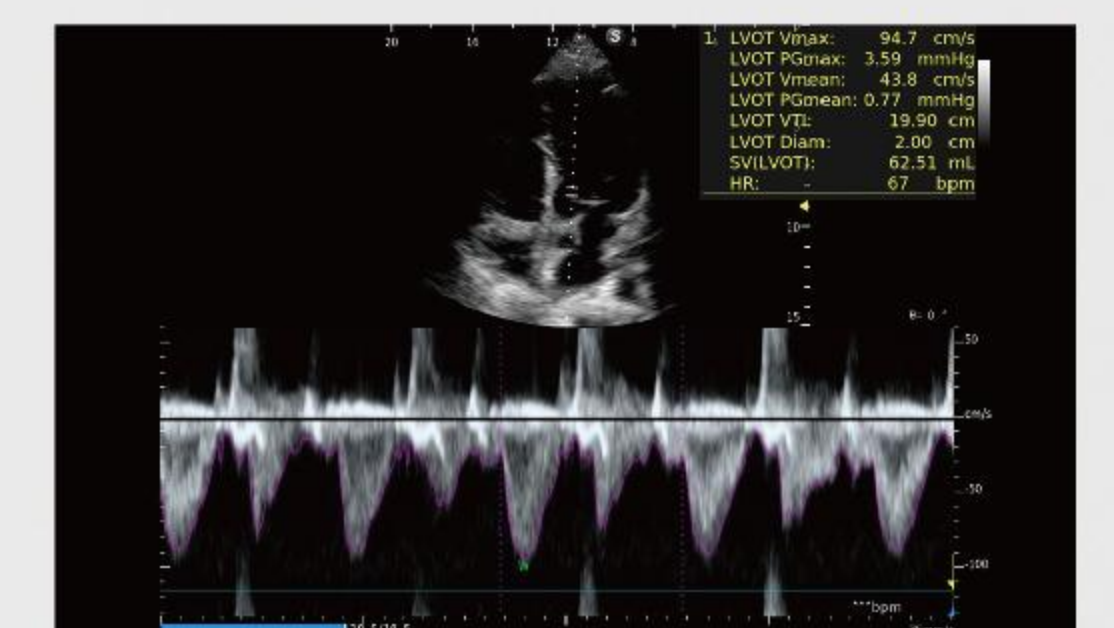


## S-VTI

Automatically locates PW sampling gate in real-time scanning.

Automatically traces the spectrum to output measurement results.

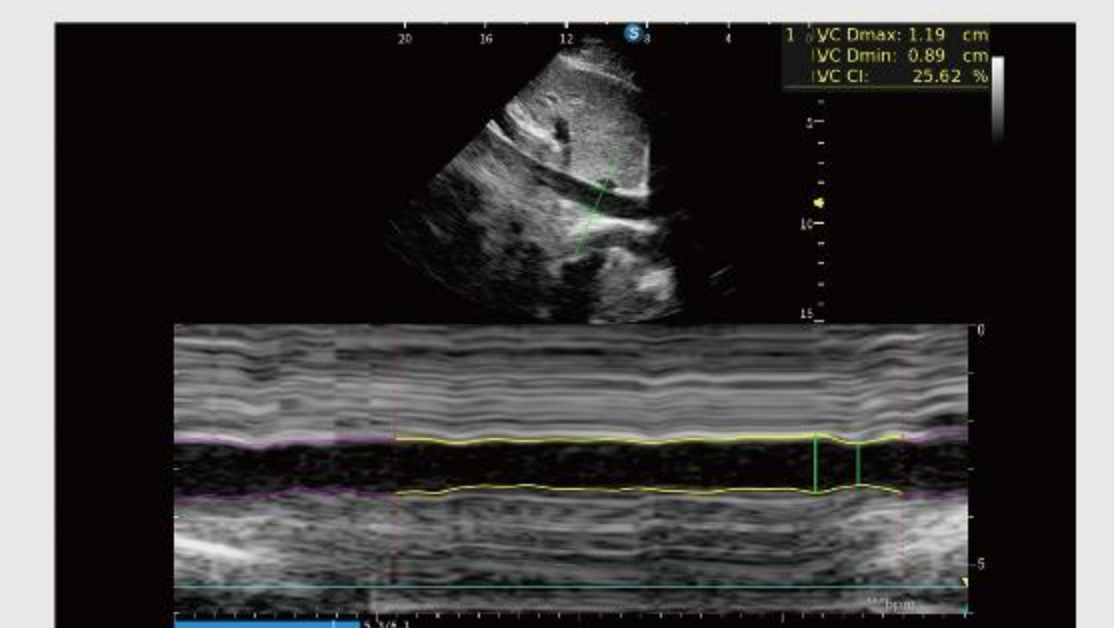
Generates VTI trend chart to guide treatment decisions.



## S-IVC

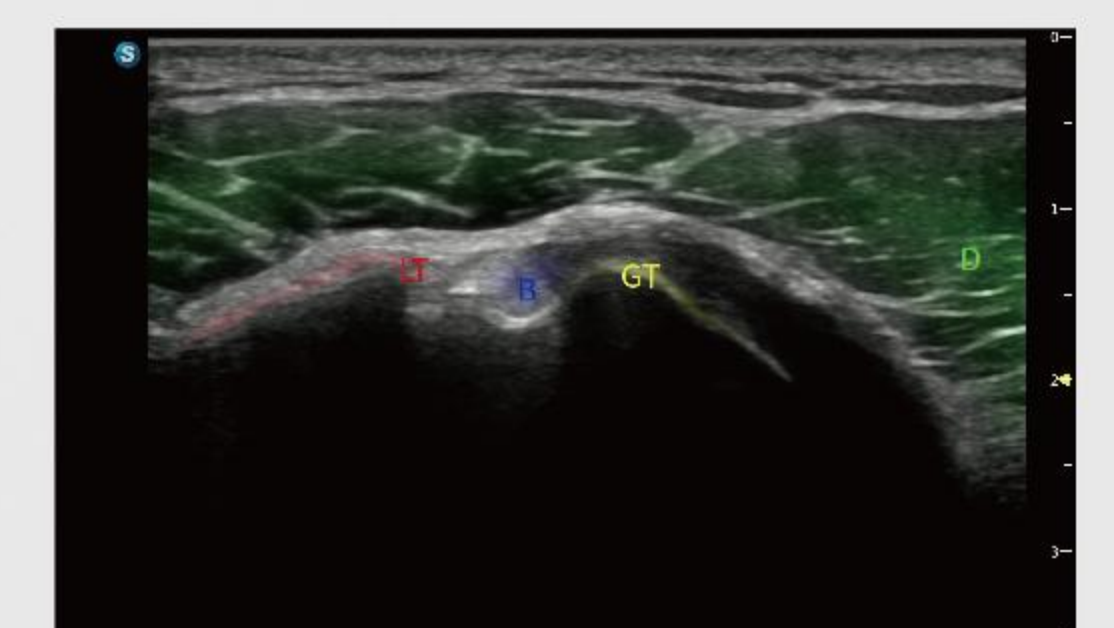
Automatically tracks IVC diameter and outputs measurements in real-time scanning or playback cineloop.

Generates IVC trend chart to guide treatment decisions.



## S-MSK

S-MSK enables the automatic identification of musculoskeletal joint standard sections. With a simple one-click, the desired standard planes are acquired immediately from the cine loop, and the anatomical structures are highlighted and annotated in the image.





# EFFORTLESS MOBILITY, SLEEK DESIGN

## Multifunctional Rear Handle

A durable bumper and cable management solution in one.

## 15.6-inch LCD Monitor with 12.3-inch LCD Touchscreen

Experience precision and clarity with the most cutting-edge screens.

## Expansive Lifting Range

Achieve the perfect height, adjusting from 830 mm to 1150 mm for optimal accessibility and comfort!

1150 mm  
830 mm

## Adjustable Multi-angle Panel

Offer versatile settings at 15° and 30° for optimal comfort and convenience!



## Ultra-slim Casters

Smooth movement in confined spaces.



# CRAFTED FOR ULTIMATE SOPHISTICATION



## Sleek Power Redefined

Discover the perfect blend of performance and portability with X11, weighing only 5.4kg and just 49mm thick—where cutting-edge technology meets unparalleled portability.



## Convenient Probe Extender

Support 1 to 4 probe extender and unlock endless possibilities in ultrasound imaging!



## Unmatched Power for Every Procedure

Experience unparalleled efficiency with X11's 8-hour total battery life featuring E-Pack, empowering doctors to focus on what matters the most.



## Effortless Charging, Lasting Durability

Our magnetic charging port makes powering up a breeze while safeguarding your cables from wear and tear over time.



## Elevate Your Ultrasound Experience

Measure with ease using its adjustable sensitivity trackball for traditional departments.