

**SonoScape**

*Where Precision Meets  
Excellence in  
Every Point-of-Care Moment*

**E11**

*Premium Portable  
Ultrasound*



**SonoScape**

**SonoScape Medical Corp.**

2F, 12<sup>th</sup> Building, Shenzhen Software Park Phase II, Keji Middle 2<sup>nd</sup> Road,  
Nanshan District, Shenzhen 518057, Guangdong, China  
Tel: +86-755-26722890 Fax: +86-755-26722850  
Email: market@sonoscape.net www.sonoscape.com

© 2024 SonoScape Medical Corp.  
All rights are reserved.

SonoScape Medical reserves the right to change the  
above information and discontinue any product at any  
time without prior notification and will not be liable for any  
consequences resulting from the use of this publication.

U-E11 2024.1108





# SMART CONNECTION, STREAMLINED WORKFLOW

The E11 laptop ultrasound is equipped with a range of powerful efficiency tools designed to enhance daily workflows for healthcare professionals. By streamlining tasks and saving valuable time, it empowers doctors with a truly convenient and user-friendly ultrasound system. With the E11, experience advanced technology that supports faster, more accurate diagnostics – all at your fingertips.

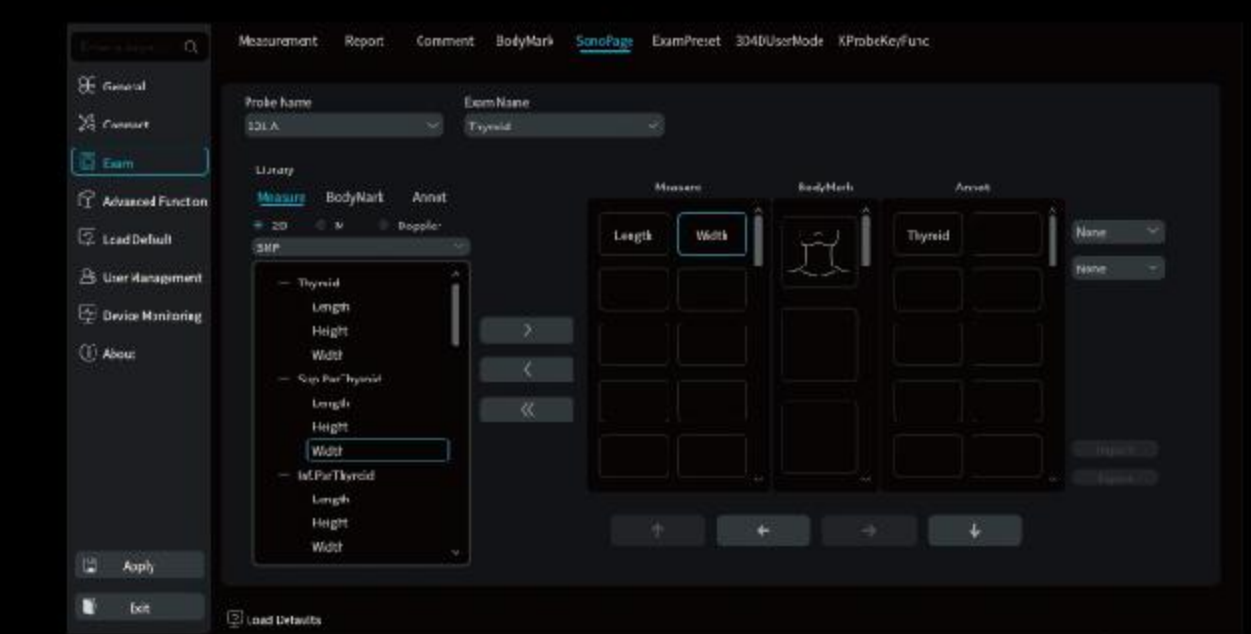


## Auto Wakeup

Offers seamless convenience by automatically activating the probe and entering the default preset when the probe is lifted from its frozen state. Simply lift the probe and get right to work, saving time and ensuring a smoother, more efficient scanning experience.

## SonoPage

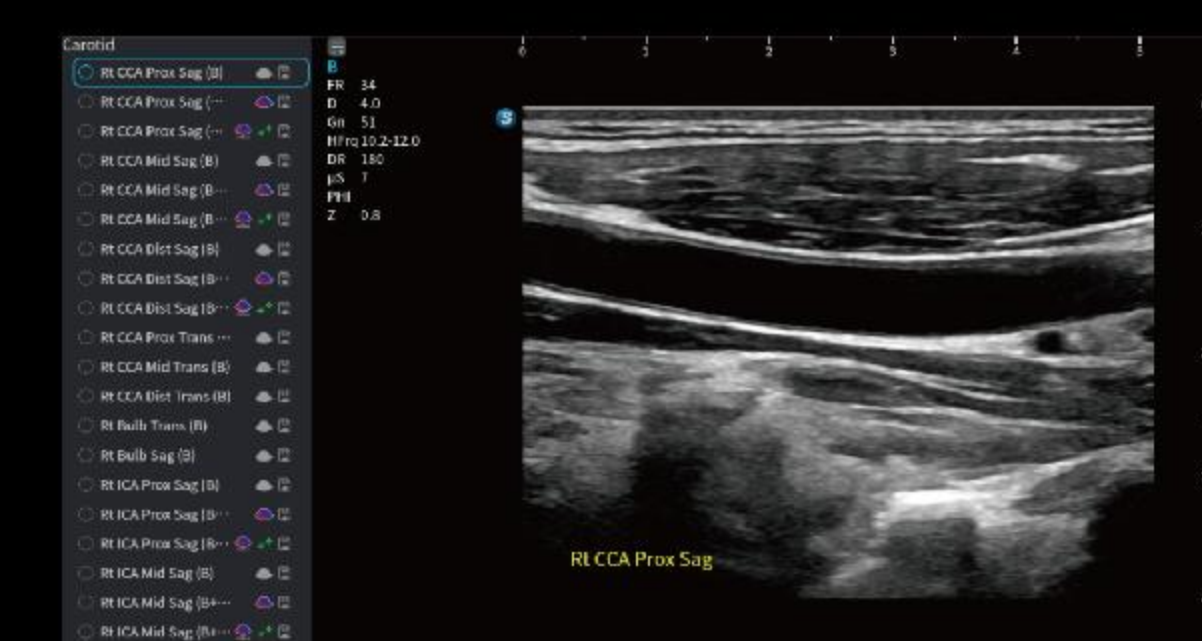
Integrates measurements, bodymarks, and annotations into one page. Streamlined interface for focused diagnostics.



Introducing E11, SonoScape's first portable ultrasound powered by the advanced C-Field+™ platform. Designed specifically for POC applications, E11 combines crystal-clear imaging with dedicated POC functions, providing an exceptional user experience for physicians. With its seamless integration of portability and performance, E11 is set to redefine what's possible in point-of-care ultrasound.

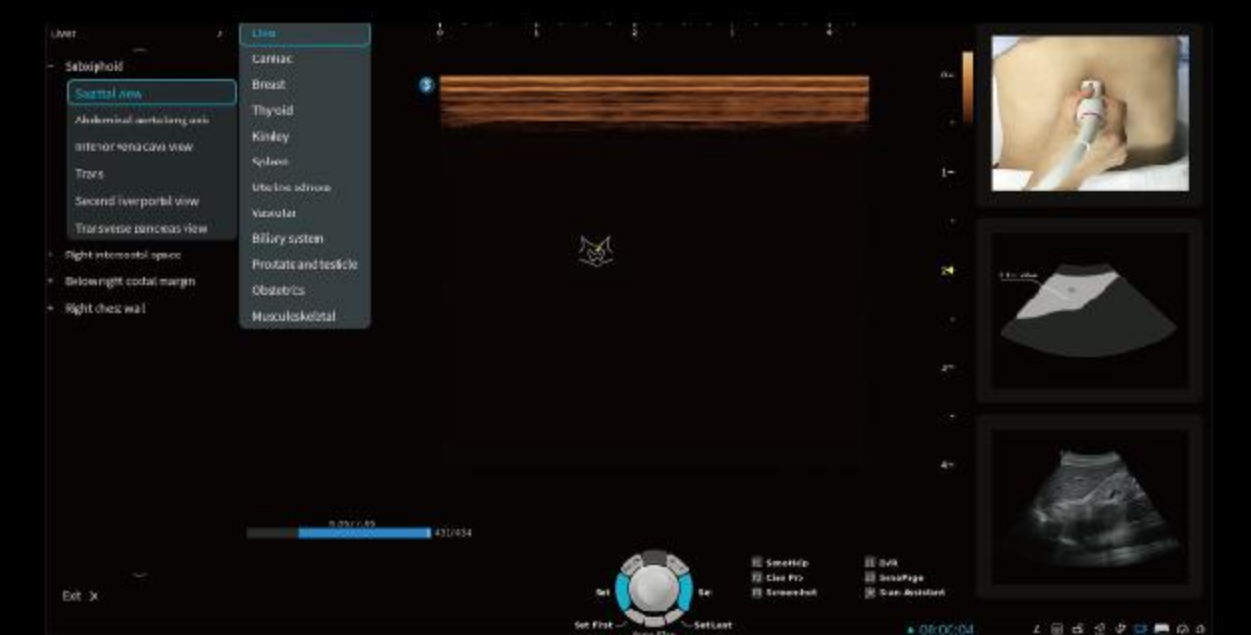
## SonoAssistant

Increases standardization and scanning efficiency. Supports user-defined protocols.



## SonoHelp

Covers a variety of applications, serving as a useful reference for less-experienced clinicians.

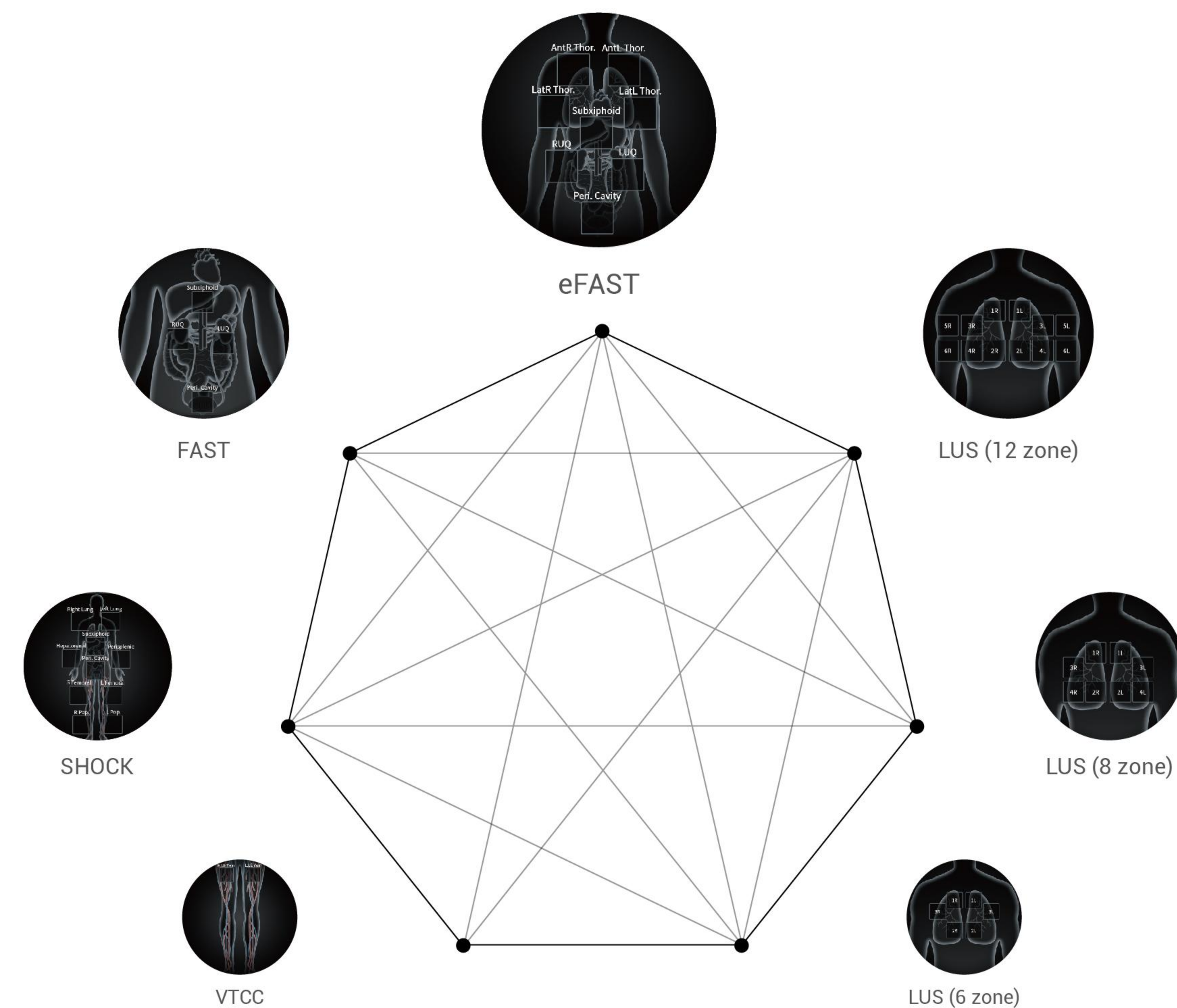


# EFFORTLESS EXCELLENCE

With multiple automated measurements tailored to POC departments and SonoFast feature designed specifically for clinical physicians, the E11 is designed to maximize clinician productivity, recognizing that every second saved can make a huge and meaningful difference.

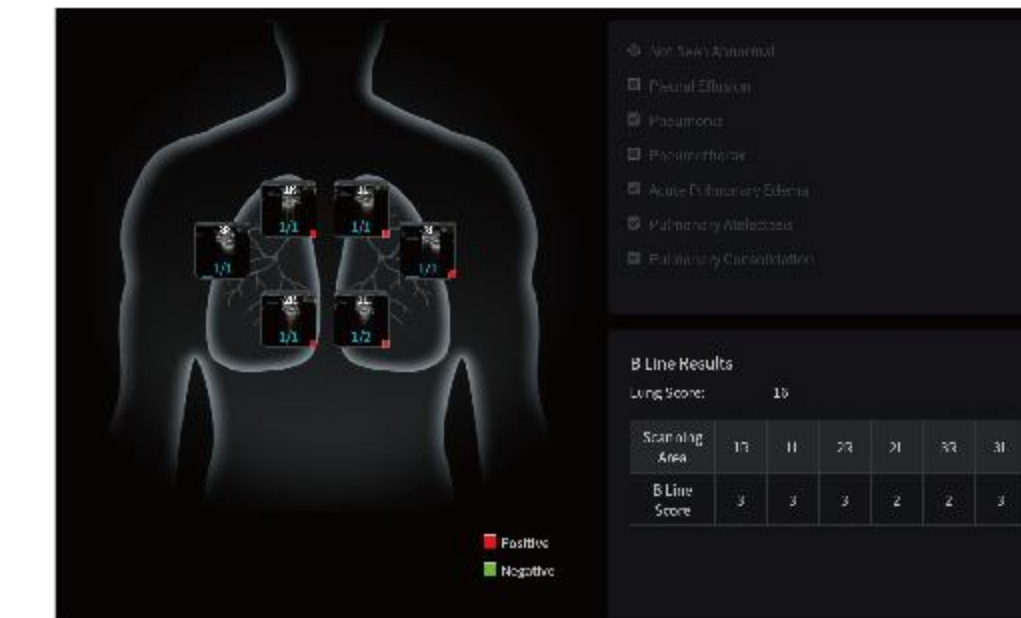
## SonoFast

SonoFast, featuring multiple built-in ultrasound protocols such as eFAST, enables doctors to reduce scanning time by up to 90%. This significant time savings greatly enhances workflow efficiency and minimizes diagnostic risks. Additionally, SonoFast supports customized ultrasound protocols, providing each physician with a tailored and personalized experience that meets their specific needs. This combination of speed and adaptability ensures healthcare professionals to deliver optimal patient care in urgent situations.



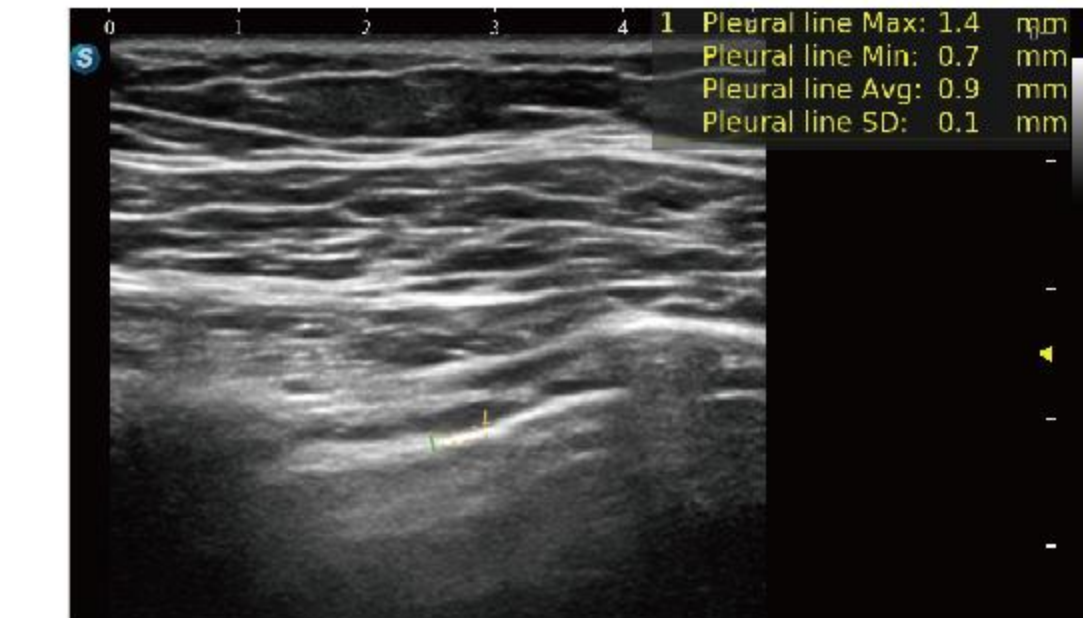
## Auto B lines

Auto B lines effectively identifies and quantifies B-lines, generating a score based on both quantity of B-lines and relevant clinical criteria. This feature visualizes the patient's lung function status through a thumbnail image of the human body, significantly enhancing the diagnostic efficiency for clinicians.



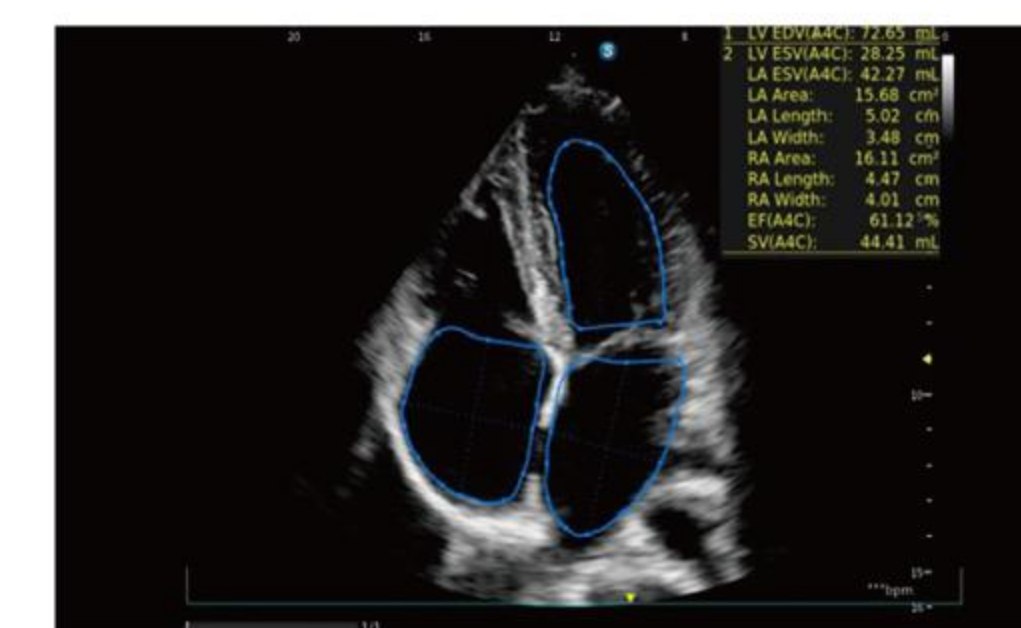
## Auto Plerual line

Pleural line thickness is of great clinical value in assessing patient's lung status, and the Auto Plerual line saves doctors' time by automatically measuring a number of pleural line parameters.



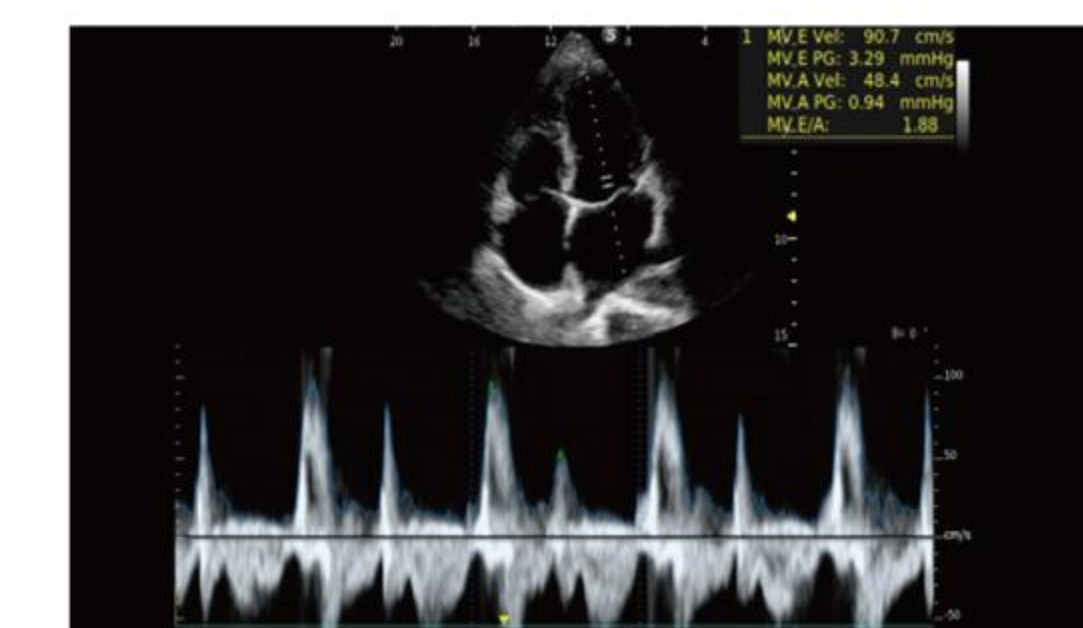
## S-CV(meas.)

S-CV (meas.) supports automatic recognition of cardiac sections, including PLAX, A4C, and IVC view. After selecting the measurement phase, it automatically displays results, allowing rapid assessment of LV systolic function (EF, SV), LV diastolic function (LAVI), RV systolic function (FAC), and RV diastolic function (IVC CI). This functionality enhances clinical efficiency and accuracy in cardiac evaluations.



## S-CV

S-CV supports real-time scanning with automatic identification of cardiac structure. It can recognize up to 8 anatomical landmarks and facilitate automated measurements in various modes such as PW mode, M mode, and TDI mode. This capability enables rapid and efficient cardiac function assessment, streamlining the evaluation process for healthcare professionals.

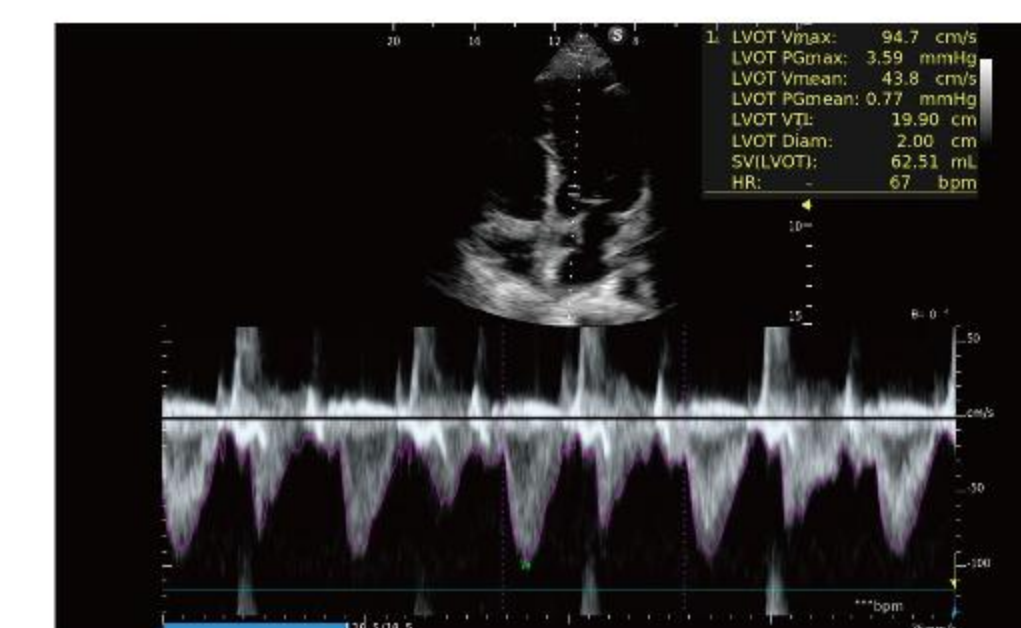


## S-VTI

Automatically locates PW sampling gate in real-time scanning.

Automatically traces the spectrum to output measurement results.

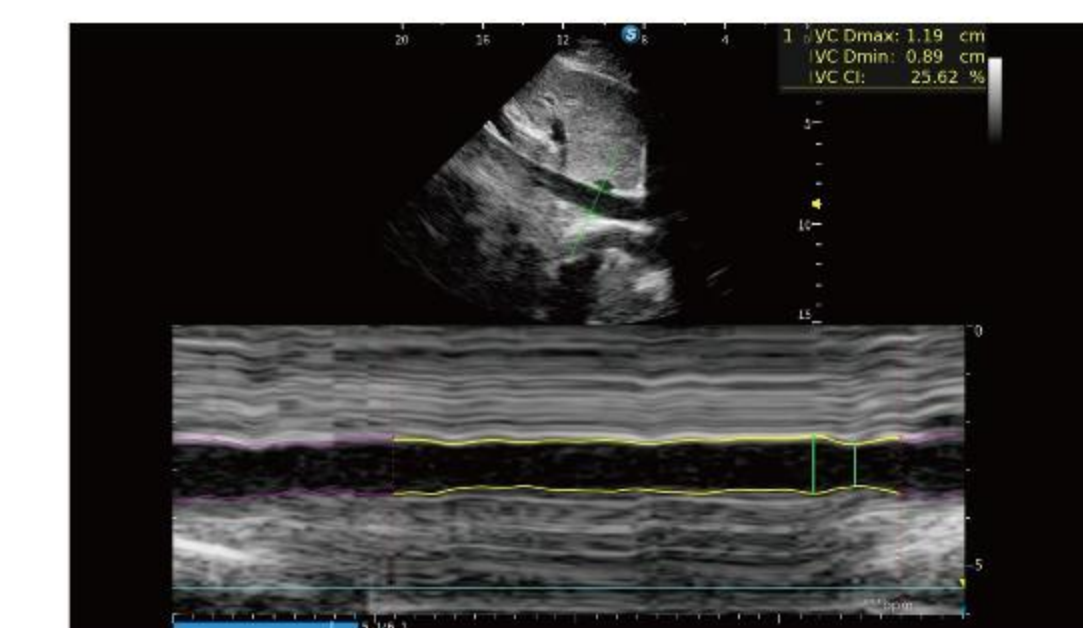
Generates VTI trend chart to guide treatment decisions.



## S-IVC

Automatically tracks IVC diameter and outputs measurements in real-time scanning or playback cineloop.

Generates IVC trend chart to guide treatment decisions.



# EFFORTLESS MOBILITY, SLEEK DESIGN

# CRAFTED FOR ULTIMATE SOFISTICATION

## Multifunctional Rear Handle

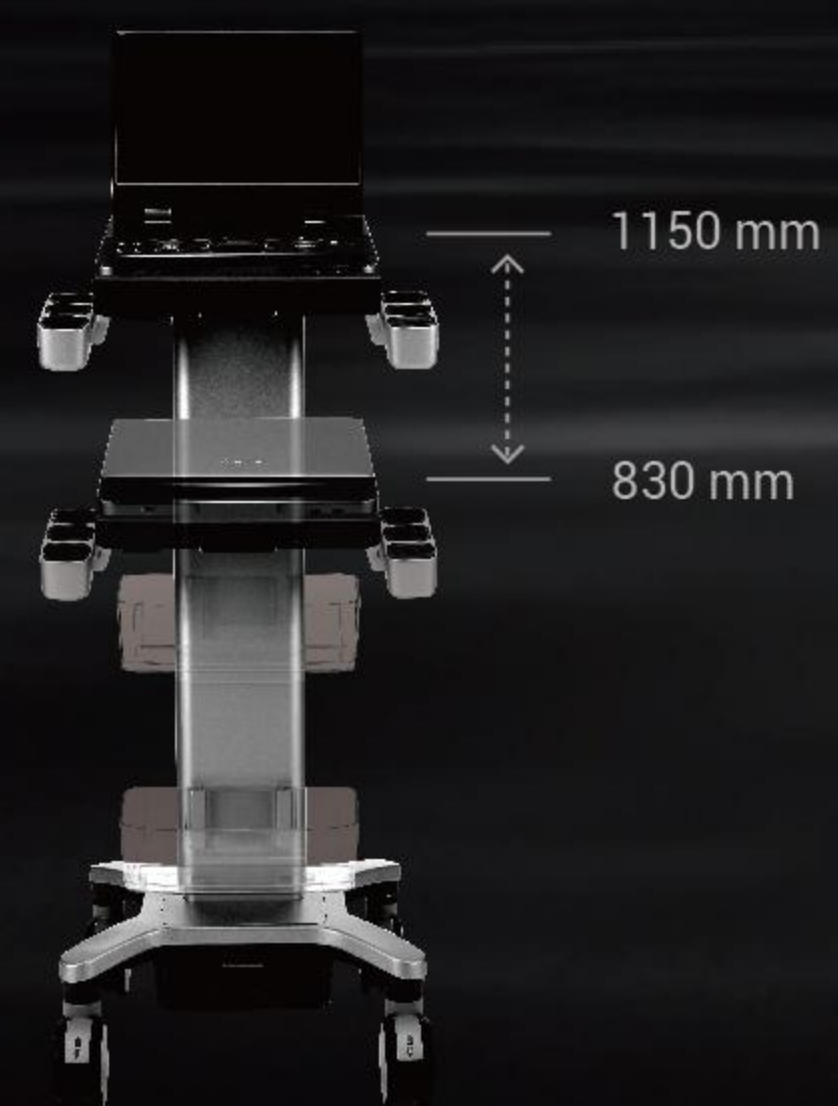
A durable bumper and cable management solution in one.

## 15.6-inch LCD Monitor with 12.3-inch LCD Touchscreen

Experience precision and clarity with the most cutting-edge screens.

## Expansive Lifting Range

Achieve the perfect height, adjusting from **830 mm** to **1150 mm** for optimal accessibility and comfort!



## Ultra-slim Casters

Smooth movement in confined spaces.



## Sleek Power Redefined

Discover the perfect blend of performance and portability with E11, weighing only **5.4kg** and just **49mm thick**—where cutting-edge technology meets unparalleled portability.



## Unmatched Power for Every Procedure

Experience unparalleled efficiency with E11's **8-hour** total battery life featuring E-Pack, empowering doctors to focus on what matters the most.



## Convenient Probe Extender

Support **1 to 4** probe extender and unlock endless possibilities in ultrasound imaging!



## Effortless Charging, Lasting Durability

Our magnetic charging port makes powering up a breeze while safeguarding your cables from wear and tear over time.



## Elevate Your Ultrasound Experience

Experience the Future with its all-seamless control panel, perfectly designed for POC applications.

