

**celticSMR**

***SonoScape***



# **Ultrasound Solutions**

SonoScape Ultrasound Product Catalog



Caring for Life through Innovation

# *Caring for Life through Innovation*

With the vision of “Caring for Life through Innovation”, SonoScape mainly focuses on the development and manufacture of high quality medical equipment, including ultrasound, endoscopy and in-vitro diagnostics.

Motivated by our goal, we have established a global R&D team with research centers in China and abroad to make the innovative medical technologies accessible and affordable. Since the day SonoScape was founded, we have insisted on carrying out our beliefs by introducing brilliant medical products and technologies into the market every year.

SonoScape is continually providing better healthcare solutions to the world. Our products and services can be found throughout China and in more than 150 countries and regions across the world.





## S80 Elite Innovation Redefined

The S80 Elite is a new premium ultrasound product developed by SonoScape based on the C-Field+ platform, making significant breakthroughs in image recognition, advanced functionality. It offers a multidisciplinary integrated intelligent clinical solution. Building upon Sonoscape's AI functionality, the S80 has additional software features to speed up imaging and increase workflow. The system is also capable of advanced imaging functions such as shear wave elastography and fusion imaging.



- **24-Inch LED monitor<sup>1</sup>/15-inch** titling touch screen provides a high definition view and a straightforward workflow.
- **Auto<sup>1</sup>** Intelligent assistant package helps to adjust Important Imaging parameters (Auto C, Auto PW) and do the measurement (Auto EF, Auto Bladder, Auto OB, Auto IMT) automatically.
- **Advanced 3D/4D imaging** with increased rendering power for high clarity visualisation.
- **Single Crystal transducers** with **touch change** to enhance workflow when changing probes.
- **Shear Wave Elastography**, empowering Quantitative Assessment for liver fibrosis, thyroid, and breast lesion characterization.
- **Fatty Liver Attenuation Imaging**. The degree of fatty liver degeneration is quantitatively assessed by calculating the attenuation coefficient.
- **Contrast-Enhanced Ultrasound Imaging**. Supports high-frame-rate contrast imaging to more dynamically display the perfusion process of lesions.
- **Fusion Imaging**, with CT/MRI data for simultaneous viewing. Built-in magnetic sensor in the probe, eliminating the need for an external magnetic sensor for stand interconnection..

# P60 Exp Intelligent Future Attainable

P60 Exp is designed to reform the practice at the frontend of women's healthcare through continuous innovation. With an exceptional acoustic architecture, superior imaging capability of P60 Exp delivers true value to the detection and diagnosis of routine to complex cases in women's health exams. Empowered by Artificial Intelligence (AI), automated standard plane acquisition, biometry measurement and 3D view optimization, allow doctors to connect patients with unprecedented confidence and efficiency.

- **S-Follicle, S-Endometrium, S-Fetus**, incorporated with big data, automate the process of measuring follicle size, endometrium thickness, important fetal biometry (BPD, AC, HC, FL) in a precise way.
- **S-Pelvic** simplifies the evaluation of pelvic floor function and provides information for the diagnosis of uterine prolapse and pelvic floor dysfunction in 2D and 3D with full automation.
- **S-Face** and **S-Spine** allow the transformation from 2D to 3D optimized view of fetal face and spine with a simple click.
- **S-Breast and S-Thyroid**, with built-in BI-RADS<sup>3</sup> and ACR TI-RADS<sup>2</sup> guideline, achieve automated lesion detection and classification reports with ease.
- **HyCoSy with SPI** intuitively displays the morphology of uterus, fallopian tube and bilateral ovaries through color coding the arrival time of contrast agents.
- **STIC** and **Color STIC** realize fast moving detection of fetal anatomy structures and enhance diagnostic confidence for fetal congenital heart disease.
- **Color 3D** visualizes blood flow in a stereoscopic and lifelike way, providing more detailed and insightful information.
- **S-Live** and **S-Live Silhouette** provide realistic view of the fetal surface and inner structures under 3D/4D mode.
- Premium **Volumetric Probe (VC2-9)** are refined to deliver better clarity, color and contrast with a wide bandwidth. The compact and lightweight design also ensures a pleasant grip, making daily scanning cozier and easier.
- **Sonodrop** makes the transmission of ultrasound images and videos between smartphones and P60 Exp smooth and easy.





## P60 Intelligence Articulated

P60, configured with SonoScape's latest prominent Wis<sup>+</sup> platform, is designed to provide more insightful and constructive evidence for diagnosis through authentic detail display, easy-but-effective intelligent analysis and streamlined workflow. The integration of state-of-the-art Artificial Intelligence (AI) makes a huge difference in efficiency, consistency and accuracy of ultrasound exams. Combined with versatile features and functions, P60 is created to empower doctors to serve patients in a broad spectrum of applications.

- **24-inch** LED monitor<sup>1</sup> / **13.3-inch** tilting touch screen provide a high definition view and a straightforward workflow.
- **Auto<sup>+</sup>** intelligent assistant package helps to adjust important imaging parameters (Auto C, Auto PW) and do the measurement (Auto EF, Auto Bladder, Auto OB, Auto IMT) automatically.
- **Single Crystal** transducers (C1-6A, S1-5) enhance energy transmission and perform pure imaging.
- **Micro F** enables visualization for micro-vascularized structures by improving blood flow sensitivity remarkably.
- **Contrast-enhanced Ultrasound: MFI** displays clearly the distribution of lesions and tiny blood vessels; **MFI-Time** intuitively shows perfusion information by color coding the arrival time of contrast agents.
- **C-xlasto** is available for elastography analysis on Linear, Convex, Endocavity probes.
- **S-MSK** works efficiently at the automatic standard plane acquisition and anatomy annotation in musculoskeletal examination.
- **S-Thyroid** intelligently detects and classifies suspicious thyroid lesions based on ACR TI-RADS<sup>2</sup>.
- **S-Breast** helps outline breast lesion border and report the classification according to BI-RADS guideline<sup>3</sup>.
- **Myocardium Quantitative Analysis (MQA)** provides in-depth quantitative report on global and regional assessment of myocardial functions.



<sup>1</sup> Optional

<sup>2</sup> American College of Radiology Thyroid Imaging Reporting and Data System

<sup>3</sup> American College of Radiology Breast Imaging Reporting and Data System

## P50 Elite Define Your Vision

The P50 Elite ultrasound system is an exquisite combination of performance and intelligence that elevates diagnostic confidence to new levels. P50 Elite improves its signal transmission and reception processors which leads to a higher sensitivity and a more accurate echo detection. What's more, it is equipped with a wide range of transducers which adopt innovative technologies and therefore promises a confident diagnostic experience. P50 Elite is ready to take care of daily clinical needs including abdominal, OB/GYN, cardiology, musculoskeletal, small parts, breast, vascular, pediatrics and more.

- 21.5 inch high definition LED monitor with articulated arm.
- 13.3 inch tilting adjustable touch screen with sensitive touch feedback and precise key selections.
- 5 active transducer sockets and a pencil transducer socket are available for a wide range of applications and improve the efficiency of day to day operations.
- Single crystal probes provide a better penetration and higher sensitivity during the examination.
- S-Live Silhouette & S-Skeleton are the new advanced intelligent rendering modes for 4D functions.
- The control panel is easy to rotate and adjust, which together with the built-in battery, leads to convenient transportation.
- Enhanced with advanced imaging architecture and probe technologies. The system enlarges diagnostic capacity and quality across a wide range of applications.
- Intelligent analysis system, equipped with a variety of automated analysis tools, provides increasingly accurate and efficient solutions.



## P20 Value and Significance



Incorporating innovative technologies, SonoScape's P20 is user-friendly designed with a simple operation panel, intuitive user interface and a variety of intelligent auxiliary scanning tools, which can significantly improve your daily work efficiency. Besides general imaging application, P20 has been entitled with diagnostic 4D technology which has an extraordinary performance in obstetrics and gynecology applications.

- 21.5 inch high-definition LED monitor
- 13.3 inch quick response touch screen
- Height-adjustable and horizontal-rotatable control panel
- Abdominal solutions: C-xlasto, Vis-Needle
- OB/GYN solutions: S-Live Silhouette, S-Depth, Skeleton
- Auto Calculation and Auto Optimization Package: AVC Follicle, Auto Face, Auto NT, Auto EF, Auto IMT, Auto Color
- Large capacity built-in battery
- DICOM, Wi-Fi, Bluetooth

X5, through years of persistent efforts and researches, is a new expert hand-carried color Doppler ultrasound system, combining extreme ergonomic design, excellent image quality, exact diagnosis as well as a wide range of applications for an unprecedented experience. Enjoy an easy to use ultrasound system with advanced technology that ensures diagnostic confidence at any level of user expertise.



## X5 Lighten Your Imaging

- Magnesium aluminum alloy unit case makes it durable enough to withstand today's harsh environments in any situation
- Ultralight design permits easy transportation and indoor and outdoor use across multiple clinical scenarios
- Well suited for general imaging, emergency and anesthesia market with the latest hardware and software capabilities
- Broad set of new generation transducers with exquisite sensitivity to help you achieve extraordinary images
- Highly sensitive color allows for rapid and confident identification of blood flow
- Flexible battery solution supports up to 180 min continuous scanning and can use a vehicle's power supply
- Wi-Fi and Bluetooth wireless connections ensures files are up to data
- Entirely new level of workflow and interactive interface provide a simple operation
- Vis-Needle function delineates needle location when performing interventions such as nerve blocks even at steep angles
- Coupled with established high-performance application tools migrated from SonoScape's premium ultrasound systems

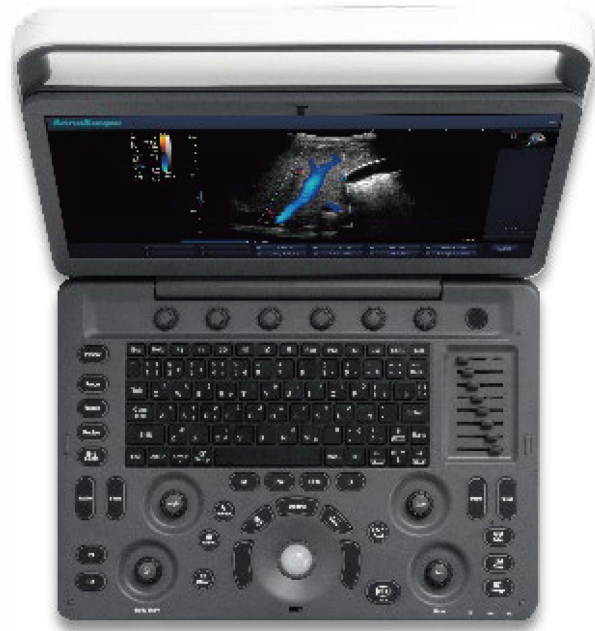
## X3 Smart Size, Smart Sight

Revolutionizing ultrasound scanning, the hand-carried color Doppler system X3 is equipped with advanced technology to present you with excellent image quality. Taking into account the various situations you may find yourself in, the X3 is extremely light weight and small with a laptop design providing you with an experience of extreme mobility and flexibility in any situation. X3, offers a wide range of transducers to fit your every need for various clinical applications, and its professional exam modes will bring renewed confidence in your examinations.

- 15.6 inch high-definition monitor
- 180° tilting angle for the monitor
- Multi-beam,  $\mu$ -Scan, Compound Imaging and Pulse Inversion Harmonic Imaging.
- A broad range of transducers: Linear, Convex, Micro-convex, Phase Array and Endocavity probe
- Extended connectors for up to 3 probes
- Comfortable backpack and travelling case
- Bluetooth and Wi-Fi wireless connection



# Exactly to Your Needs



## E2

E2 is an entry level color Doppler ultrasound system that reaches beyond your expectations due to its compact and fashionable appearance. It fulfills GI, OB/GYN, Cardiac and POC applications to fit your routine scanning needs while its color mode will help you for a more accurate and efficient diagnosis of lesions.

- 15.6 inch high resolution anti-flickering LED monitor
- Up to 2 transducer ports
- Backlit Keyboard and intelligent panel
- Long-lasting battery for 90 min
- Wi-Fi, Bluetooth, DICOM, 500GB hard disk
- Carry-on site suitcase

- Light weight and compact design.
- $\mu$ -Scan, Compound Imaging, Widescan, PW Doppler, Chroma and B steer for linear probe.
- Dynamic Multi-beam Imaging and Tissue Specific Imaging.
- Extensive transducer family including, Linear, Convex, Micro-convex, Phased Array, Endocavity probes





UK distributor for Sonoscape ultrasound

Celtic SMR Ltd., Frederick House, Hayston View, Johnston,  
Haverfordwest,  
Pembrokeshire SA62 3AQ,  
United Kingdom

0800 270 9050

sales@celticsmr.co.uk  
www.celticsmr.co.uk



## SonoScape

2002: Company Founded in Shenzhen, China

2008: Received "European Entrepreneurial Company 2008" award from FROST & SULLIVAN

2009: Received "Product Quality Leadership Award 2009" from FROST & SULLIVAN

2011: Received the Reddot 2011 Product Design Award for S20 in Essen, Germany

2013: Received "Ultrasound Market Growth Leadership Award, 2013" from FROST & SULLIVAN

2014: Received the iF product design award 2014 for S9 in Munich, Germany

2014: Received "Company of the Year in Ultrasound Market, 2014" from FROST & SULLIVAN

2016: Received "Product innovation in Electronic Endoscopy Market" from FROST & SULLIVAN

2017: Received the iF product design award 2017 for X5 in Munich, Germany

2017: Listed on the Shenzhen Stock Exchange in April



ISO 13485

CE 0197

© 2020 SonoScape Medical Corp.  
All rights are reserved.

SonoScape Medical reserves the right to change the above information and discontinue any product at any time without prior notification and will not be liable for any consequences resulting from the use of this publication.