

# COCOON

for Vets

It's not just a regular x-ray. **COCOON**



Lightweight, safe, easy, and convenient to use gun-type portable x-ray



## Technical Specifications

Tube Voltage	70KV (Fixed)
Tube Current	1.7mA / 2.0mA (Fixed)
Focal Spot	0.4mm
Target Angle	12.5
Exposure	0.05 - 1.35sec (0.01 increments)
Total Filtration	Over 2.3 mm Al (Inherent Filtration 1.0 mm Al)
Weight	4.78 pounds
Detector	Film/Digital Sensor/PSP
Power Supply	16.8V (Rechargeable battery)

Visit our website ► [WWW.DEXCOWIN.COM](http://WWW.DEXCOWIN.COM)

Contact us ► [INFO@DEXCOWIN.COM](mailto:INFO@DEXCOWIN.COM)

**DEXCOWIN**®

DEXCOWIN | **COCOON** It's not just a regular x-ray. Choose best, choose us.

# COCOON

It's not just a regular x-ray. **COCOON**

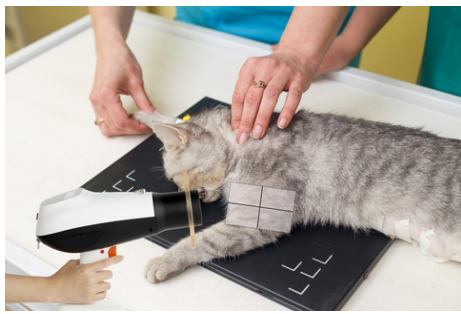
## FEATURES



### AIMING LIGHT

- Rotary plate provides accurate x-ray positioning and the aiming light can be used to more precisely pinpoint where the x-ray is being taken

**+ Highlight:** Aiming light makes it easier for users to take precise x-rays



U.S Application Patent 17/329,540

### ADVANCED RADIATION SAFETY

- Internally: Lead wrapped generator ensures no radiation leakage
- Externally: Back scatter shield provides safety from radiation exposure
- Trigger Safety & Screen Lock: Prevents unwanted x-ray exposure

**+ Highlight:** Ensures both user & patient safety by reducing unwanted radiation exposure.

### INTUITIVE UI

- COCOON changes the exposure time automatically based on what body part is being exposed to radiation
- Can choose what type of sensor to use with COCOON
- Users can easily control different features on COCOON using the control panel



**+ Highlight:** The intuitive UI allows users to use COCOON without any confusion

### ERGONOMIC DESIGN

- Gun-type portable x-ray
- Easy to clean because of its UV coated case
- Weighing in at less than five pounds and having a gun-type trigger, it is easy to take x-rays with COCOON

**+ Highlight:** Easy and convenient to use

### HIGH CAPACITY BATTERY

- The cradle provides a convenient charging platform, while the Li-battery has a long lasting life cycle
- The battery just takes one hour to be fully charged
- The automatic shut down function lowers power consumption to maximize battery capacity.

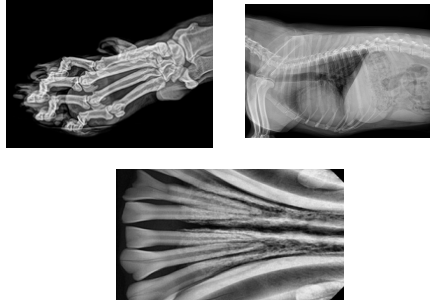
**+ Highlight:** COCOON can take up to 500 x-rays on a full charge



### VOICE GUIDANCE SYSTEM

- The voice guidance system makes COCOON easier to use by providing users with guidance on how to use the device

### HIGH RESOLUTION IMAGE QUALITY



FDA and States Approved



DEXCOWIN | COCOON It's not just a regular x-ray. Choose best, choose us.