

**SonoScape**

# Shared Service for Cardiovascular

Clear display of anatomical structures and hemodynamics and precise functional assessment are at the core of P60 series to enhance diagnosis evidence in cardiovascular imaging.

## Expert Cardiovascular Probes

- Single crystal S1-5 has better penetration and S/N ratio, especially useful for scanning difficult patients
- High frequency 7P-A is dedicated for pediatric heart exams with extraordinary spatial and temporal resolution
- MPTEE and MPTEE mini probe are available for adult and pediatric transesophageal echocardiography exams
- Combination of high (12L-A, 12L-B ) and low (9L-A) frequency covers vascular exams at different depth

## SR Flow

- More easily filters out tissue signal and artifacts and reserves blood signal
- Higher blood sensitivity and realistic hemodynamics
- Easy detection of small vessels and slow flows

## Auto C

- Automatic ROI box positioning and steering angle adjustment
- Easy optimization of color flow detection maximizes the efficiency for Doppler exams



## Auto IMT

- Easy measurement of anterior and posterior intima-media thickness by drawing a ROI box
- Provides potentially more consistent results than measuring manually

## AMM

- Up to 3 M-Mode lines can be set at any location and angle and activated simultaneously
- Easy M-Mode imaging for technically difficult position

## Stress Echo

- Applicable for both exercise and pharmacologic protocols
- User-editable operation protocol to satisfy different clinical preference
- Professional myocardial scoring and reporting

## \*Sono-Assistant

- Customizable vascular scanning protocol helps streamline workflow while reducing keystrokes and exam time

## Auto EF

- Automatic ejection fraction calculation based on left ventricular wall tracing and Simpson's rule
- Save time and efforts compared with manual measurement

## TDI

- Uses myocardial Doppler frequency shifts to quantify myocardial tissue motion
- Pulsed and color Doppler are both available for clear visualization and informative analysis

## \*Myocardium Quantitative Analysis

- Precise ventricular wall motion detection with real-time sensitive tissue tracking
- Global and regional quantitative analysis including strain, strain rate, displacement, velocity, etc. on myocardial functions

## Sono-Help

- Concrete cardiac tutorial covering all sorts of applications regarding probe position, anatomy illustration and standard ultrasound image examples

\* Due to regulatory reasons and varying software version their future availability cannot be guaranteed.



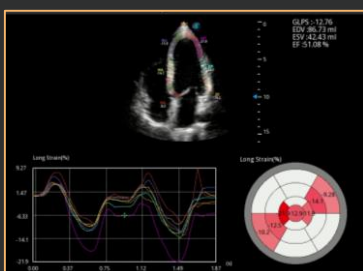
Hypertrophic Cardiomyopathy with S1-5



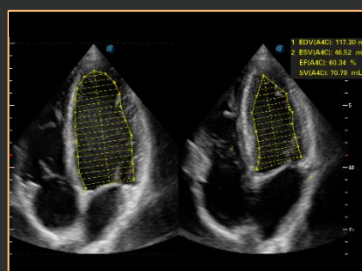
Aortic regurgitation with S1-5



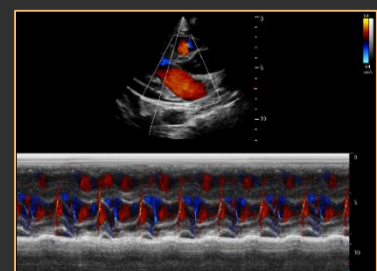
Stress Echo



MQA with Strain Analysis



Auto EF



Mitral Valve with Color M Mode