

**SonoScape**

# Vascular Imaging

Professional toolkits on P60 series take care of comprehensive vascular exams and create streamlined workflow, from cardiovascular conditions to peripheral vascular health.

## Composite Crystal Linear Probe

- Novel composite material with much better piezoelectric effect
- Wider bandwidth and improved acoustic spectrum
- Exquisite resolution in small parts, vascular, etc.
- Combination of high (12L-A, 12L-B) and low (9L-A) frequency covers vascular exams at different depth

## Single Crystal Convex C1-6A

- The use of single crystal and ingenious craftsmanship generate higher energy transmission
- Useful for scanning difficult patients and deep vessels

## Single Crystal Sector S1-5

- Single crystal material empowers pure transcranial Doppler imaging
- Wide bandwidth, high fidelity and deep penetration deliver diagnostic confidence for diseases like intracranial arterial stenosis, etc.



## Micro F

- An innovative technique that effectively distinguishes minute vessels and low velocity flows
- Detailed views of blood flow to evaluate lesion, tumor, and tiny peripheral blood flow

## Auto C

- Automatic ROI box positioning and steering angle adjustment
- Easy optimization of color flow detection maximizes the efficiency for Doppler exams

## SR-Flow

- More easily filters out tissue signal and artifacts and reserves blood signal
- Higher blood sensitivity and realistic hemodynamics
- Easy detection of small vessels and slow flows

## Auto PW

- Simplifies and streamlines the PW exam by auto adjusting baseline and PRF
- Flexible auto trace for PW spectrum gets precise information at one touch

## \*Bright Flow

- 3D visualization of color Doppler flow
- Intuitive display of blood flow structures, especially for boundary definition of tiny vessels

## Auto IMT

- Easy measurement of anterior and posterior intima-media thickness by drawing a ROI box
- Provides potentially more consistent results than measuring manually

## Color Panoramic Imaging

- Panoramic imaging available in color Doppler
- Helps to acquire a whole view of long vessels like carotid and peripheral arteries

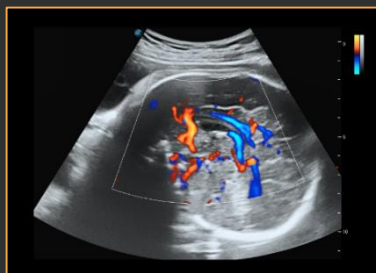
## \*Sono-Assistant

- Customizable vascular scanning protocol helps streamline workflow while reducing keystrokes and exam time

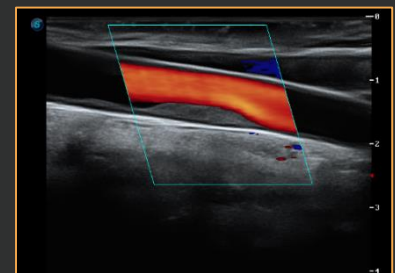
\* Due to regulatory reasons and varying software version their future availability cannot be guaranteed.



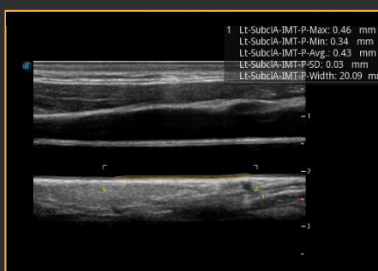
Renal Blood Flow with Micro F



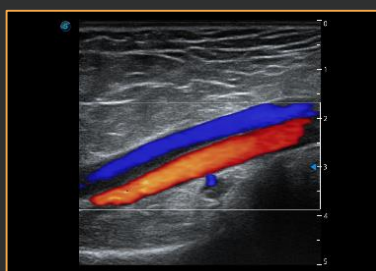
Fetal Cranial Blood Flow with SR-Flow



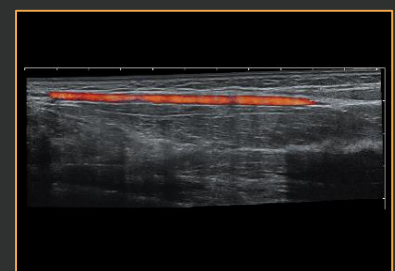
Carotid Plaque with Blood Flow



Auto IMT



Deep Lower Limb Blood Flow



Radial Artery with Color Panoramic Imaging