

**SonoScape**

**P50**

Define your Vision



**SonoScape**

SonoScape Medical Corp.  
Yizhe Building, Yuquan Road, Shenzhen, 518051, China  
Tel: +86-755-26722890 Fax: +86-755-26722850  
Email: Market@sonoscape.net www.sonoscape.net



A close-up, high-angle photograph of the control panel of a SonoScape P50 ultrasound system. The panel is light grey and features a variety of controls: a full QWERTY keyboard on the left, a trackball in the center with a red ring, and numerous buttons and knobs on the right. The buttons are labeled with functions such as 'Pointer', 'Update', 'Annot', 'Calliper', 'Auto', 'Image', 'Cine', 'Depth', 'Zoom', '3D/4D', 'Angle', 'Clear', 'CW', 'PW', 'CFM', 'B', 'M', 'ISY', 'Erase', 'Report', 'End Exam', 'Invert', 'Printscr', 'Del', 'Back', 'Enter', 'Shift', 'Alt Gr', and 'Scr-Zoom'. The 'SonoScape' logo is printed in white on a black background at the top right of the panel.

SonoScape

**Easily** accomplish more with SonoScape's new P50 ultrasound system. Incorporating single crystal clarity, automotive corrections and calculations, and user defined flexibility promises a confident diagnostic experience as well as opening new doors of opportunity for ultrasound use.



SonoScape

SonoScape

# Powerful Compact Precision

Taking into consideration the evolving expectations and needs for ultrasound, the P50 is a slim and unobtrusive trolley system that is comfortable in tight, congested spaces with little room to work in. Providing everything you need for a comfortable examination in a small for both you and your patient.



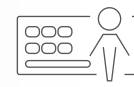
**21.5"** high resolution LED monitor with an articulating arm.



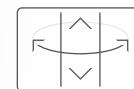
**13.3"** high sensitivity touch screen, for improved user experience.



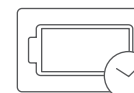
**Simplified** control panel helps to optimize exam workflow and reduce operating time.



The **Customizable** keyboard increases flexibility for different user preferences and workflow situations.



**Adjustable** console height and keyboard rotation to fit user preferences.



Power **Assistant** battery operation for emergencies in power failure and enhanced mobility convenience.



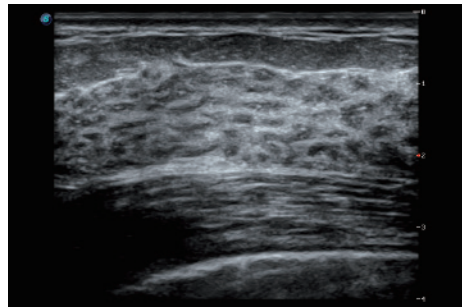


# Solutions for Radiology

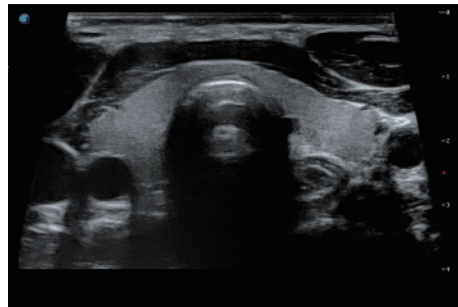
Imagine a leading-edge ultrasound system so versatile that it can meet the demands of virtually any clinical setting. With the P50, you'll have a high-performance system ready and able to meet the imaging needs for a full range of clinical applications.



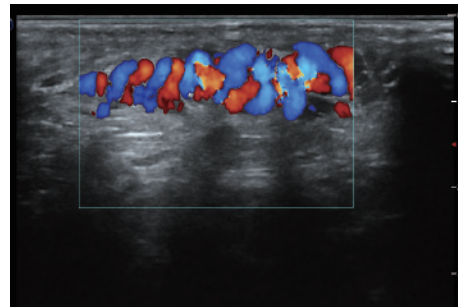
Gallblader



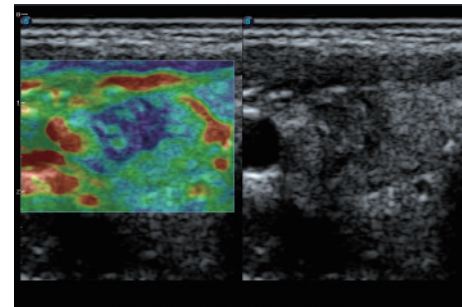
Breast



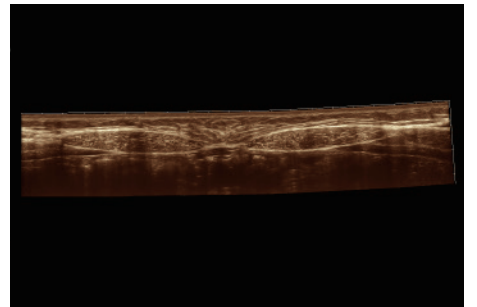
Thyroid



Spermatoca Vein



C-xlasto Imaging



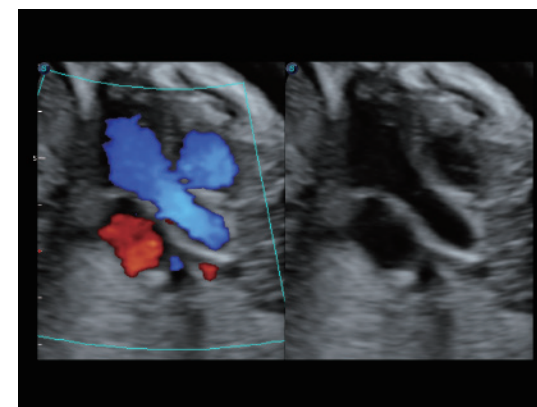
Real-time Panaromic



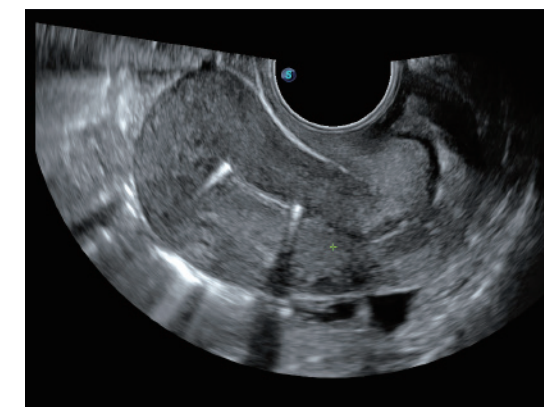


# Solutions for Obstetrics and Gynecology

P50's superior image quality, automated measurement tools, and a variety of obstetrics and gynecological technologies allow the P50 to give ideal solutions for clinical examinations.



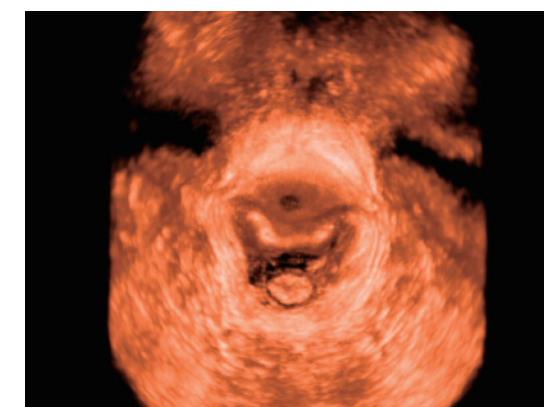
Fetus cardiac



Uterus



Fetus spine



Pelvic floor

## S-live Silhouette

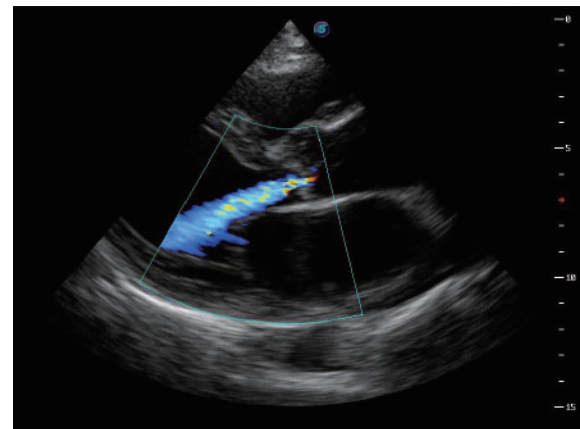
A unique transparent volume image for a more comprehensive view of anatomy internally and externally.

## Pelvic Floor 4D

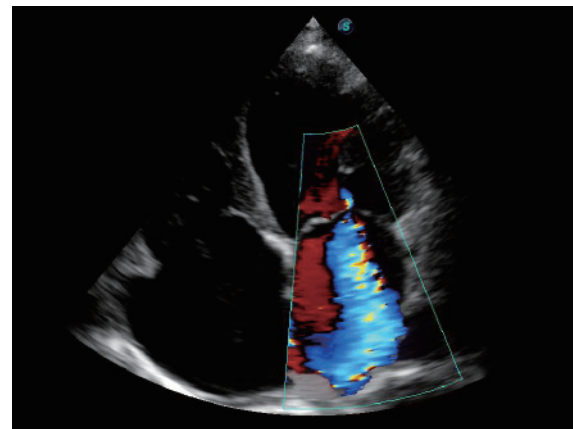
Provides useful clinical assessment of the impact of vaginal delivery on the female anterior compartment, judging whether the pelvic organs prolapsed or not, the extent of prolapse.

# Solutions for Cardiovascular

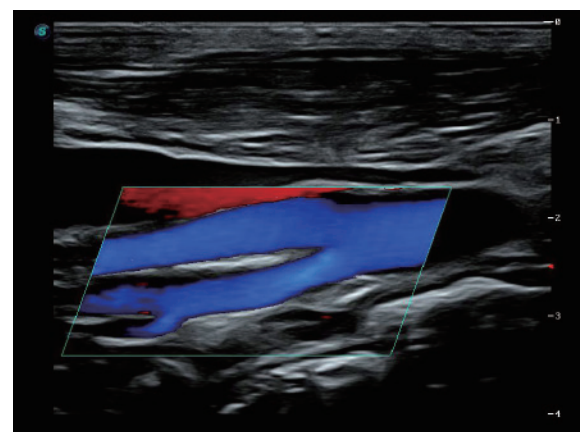
P50 provides clear 2D clinical images and Doppler sensitivity to assess critical cardiac performance. With single crystal transducers P50 delivers higher frame rates and Doppler sensitivity to effectively and accurately assess critical cardiac performance.



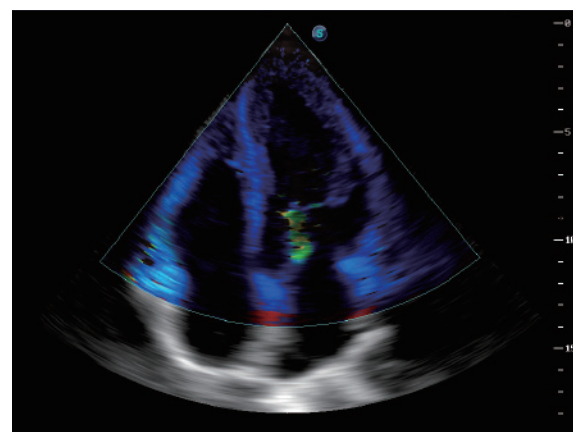
Cardiac



Cardiac



Carotid artery



TDI

## Intelligent Tools

The P50 works with you to increase your examination workflow through the use of intelligent analysis tools and automatic image optimization. To make the examination even easier for the user, the system configuration settings ensure that the system works best for you and your team.

