

SonoScape

P50



S11



S50



S40



S30



S22



S20



S12



P50



Persistence
in
Perfect
Performance

Competitor



Sonoscape

P50

Mindray

DC-8Exp

GE

Logiq P9

GE

Voluson S8

SAMSUNG

HS70A

CONTENTS



1

Exceptional Mobility with
Compact Design

2

Consistent Quality
Performance Across
Applications

3

Tailored Solutions For
Various Applications

Exceptional Mobility with Compact Design

1325mm

766mm

524mm



Exceptional Mobility with Compact Design

SonoScape



21.5 inch high resolution LED color monitor

13.3 inch touch screen, more sensitive



Exceptional Mobility with Compact Design

SonoScape



Reduce doctors arm movement and fatigue

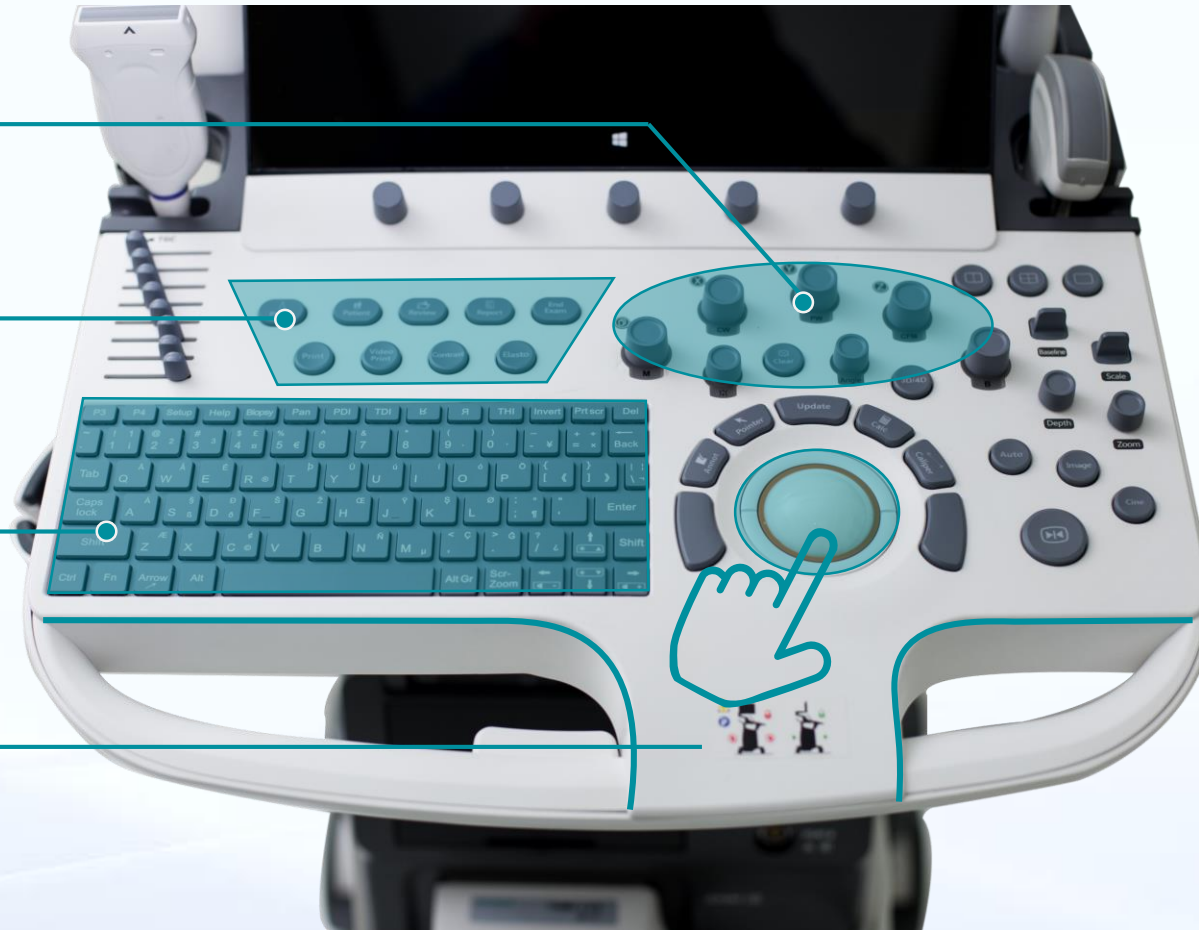
Exceptional Mobility with Compact Design

Mode keys

Patient management and advanced function

Standard keyboard

Space for hand wrist



Exceptional Mobility with Compact Design

SonoScape

Gel-Warmer

Cable management

Tailor-made probe holders

5 probe connectors



Exceptional Mobility with Compact Design

SonoScape

1090mm



- Built-in battery
- Easy to move
- Convenient to transport



CONTENTS



1

2

3

Exceptional Mobility with
Compact Design

Consistent Quality
Performance Across
Applications

Tailored Solutions For
Various Applications

Consistent Quality Performance Across Applications



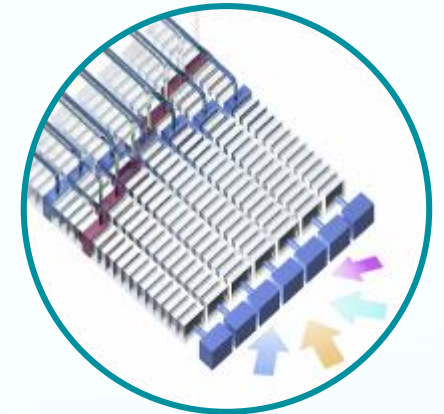
Single Crystal Transducer



μ-Scan imaging

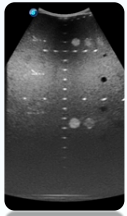


Smart Dynamic Color

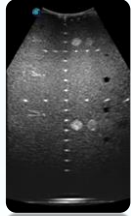


C-Field Beam

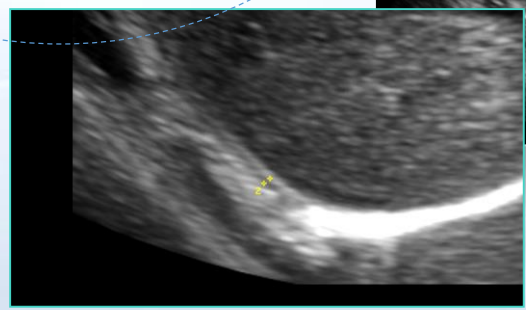
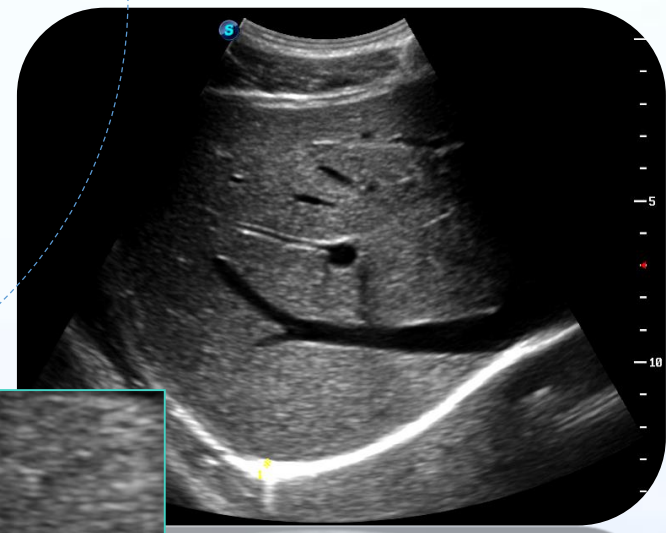
Singles Crystal Transducer



traditional Convex



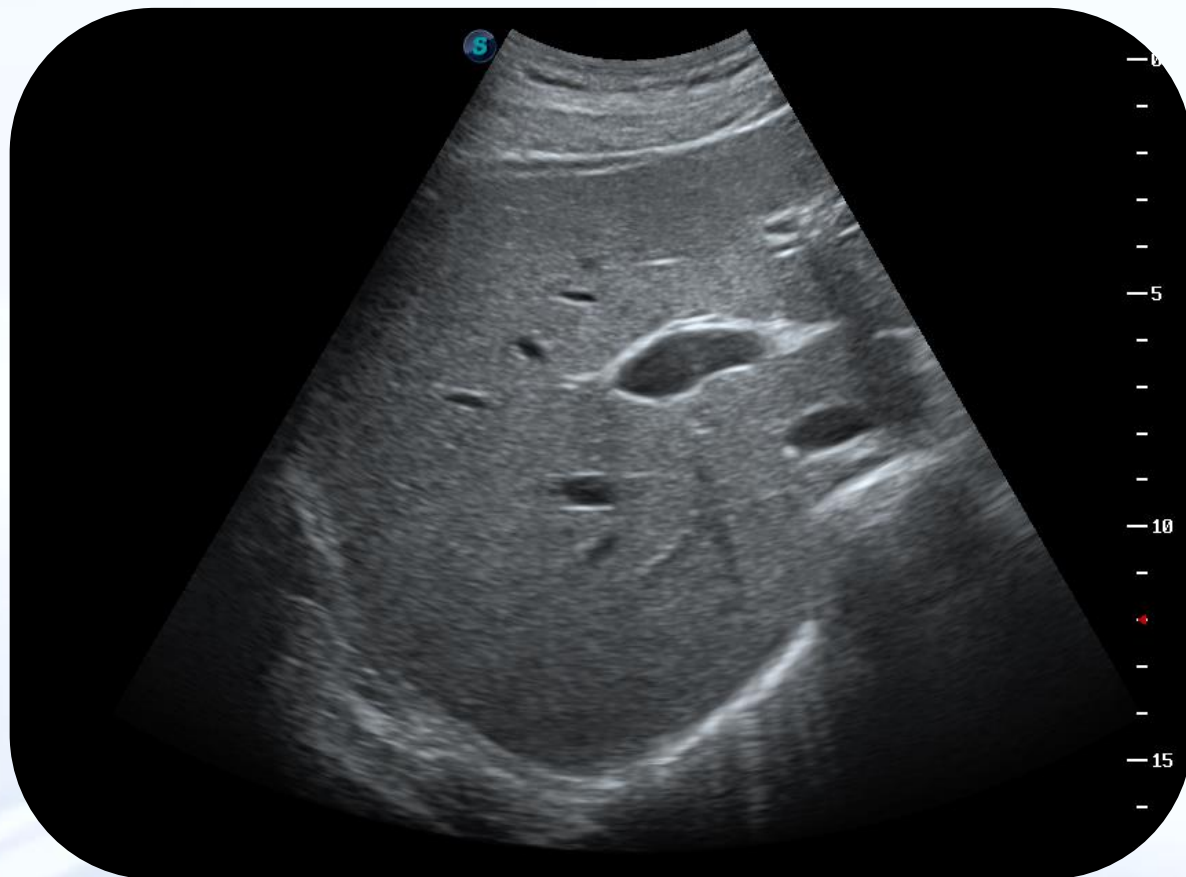
Single Crystal



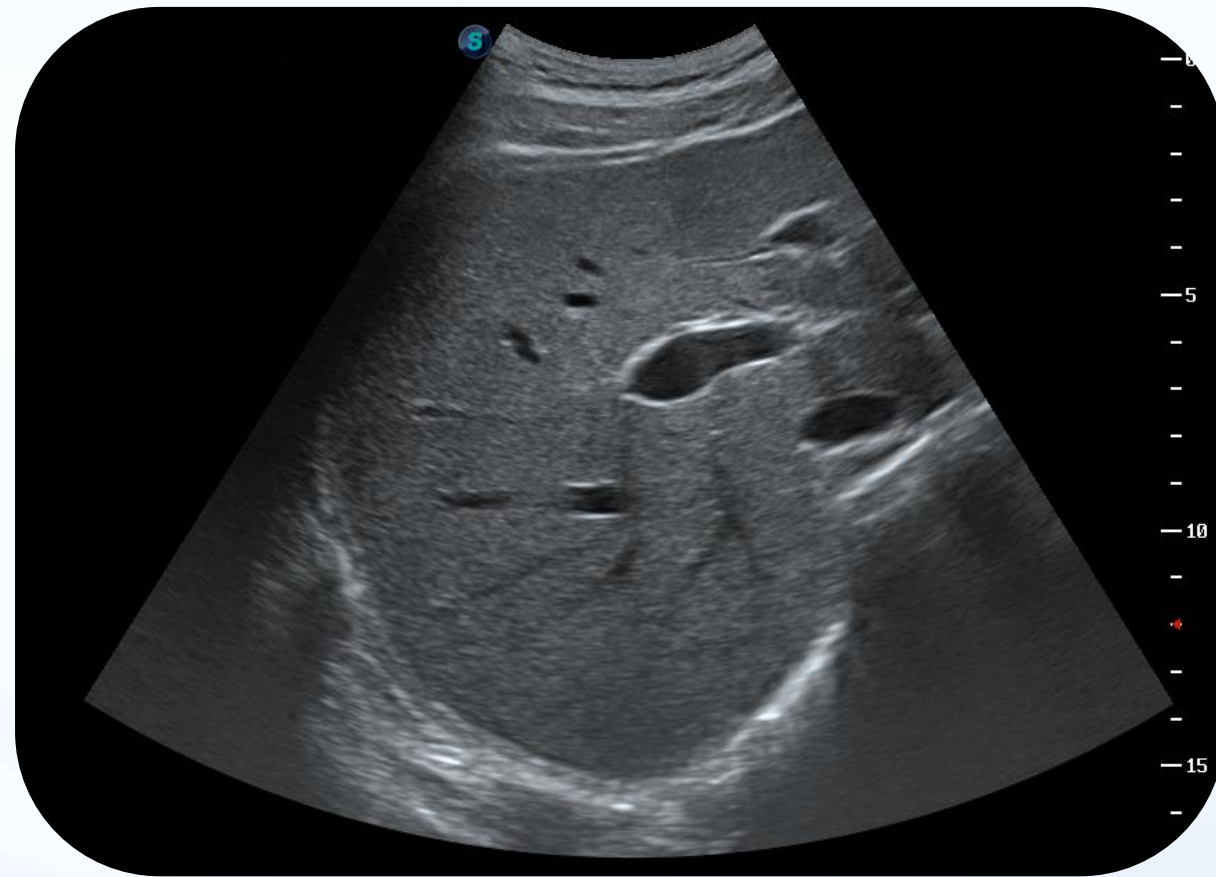
- Wider bandwidth
- Higher sensitivity
- Better penetration
- Higher S/N

Single Crystal Transducer

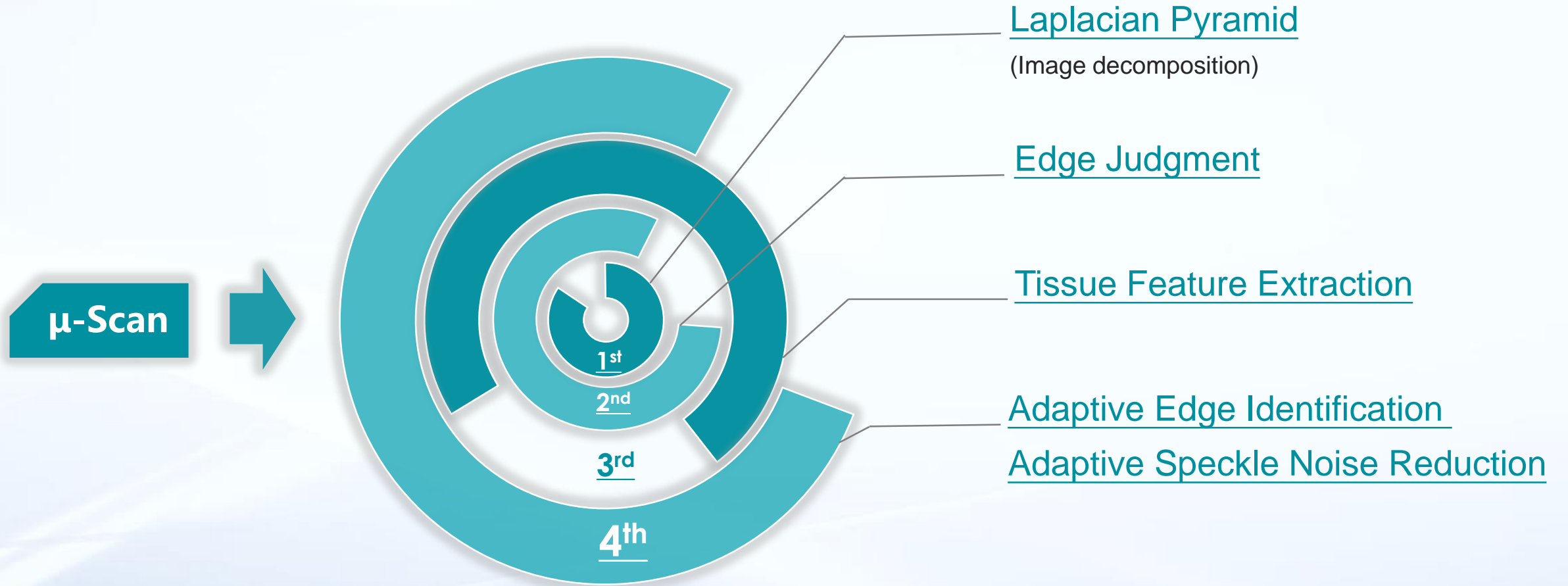
SonoScape

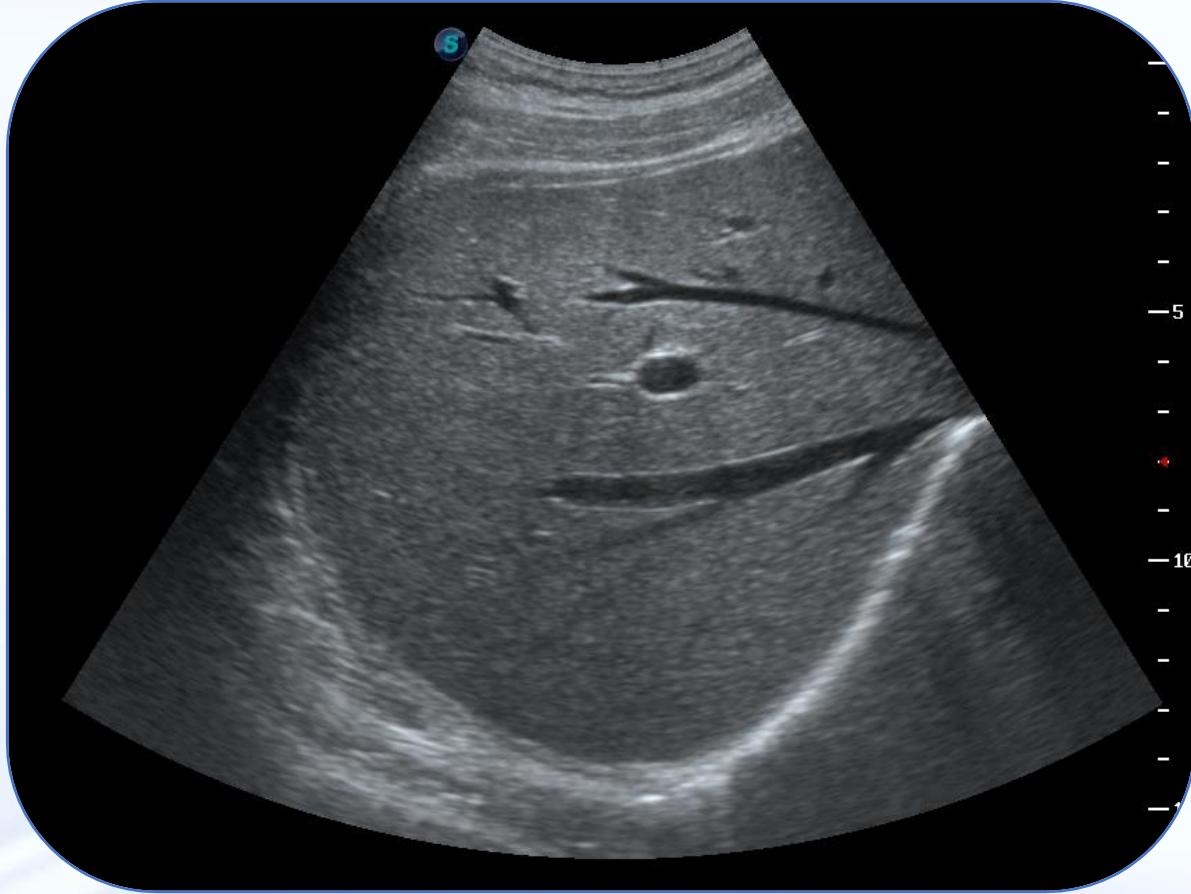


3C-A

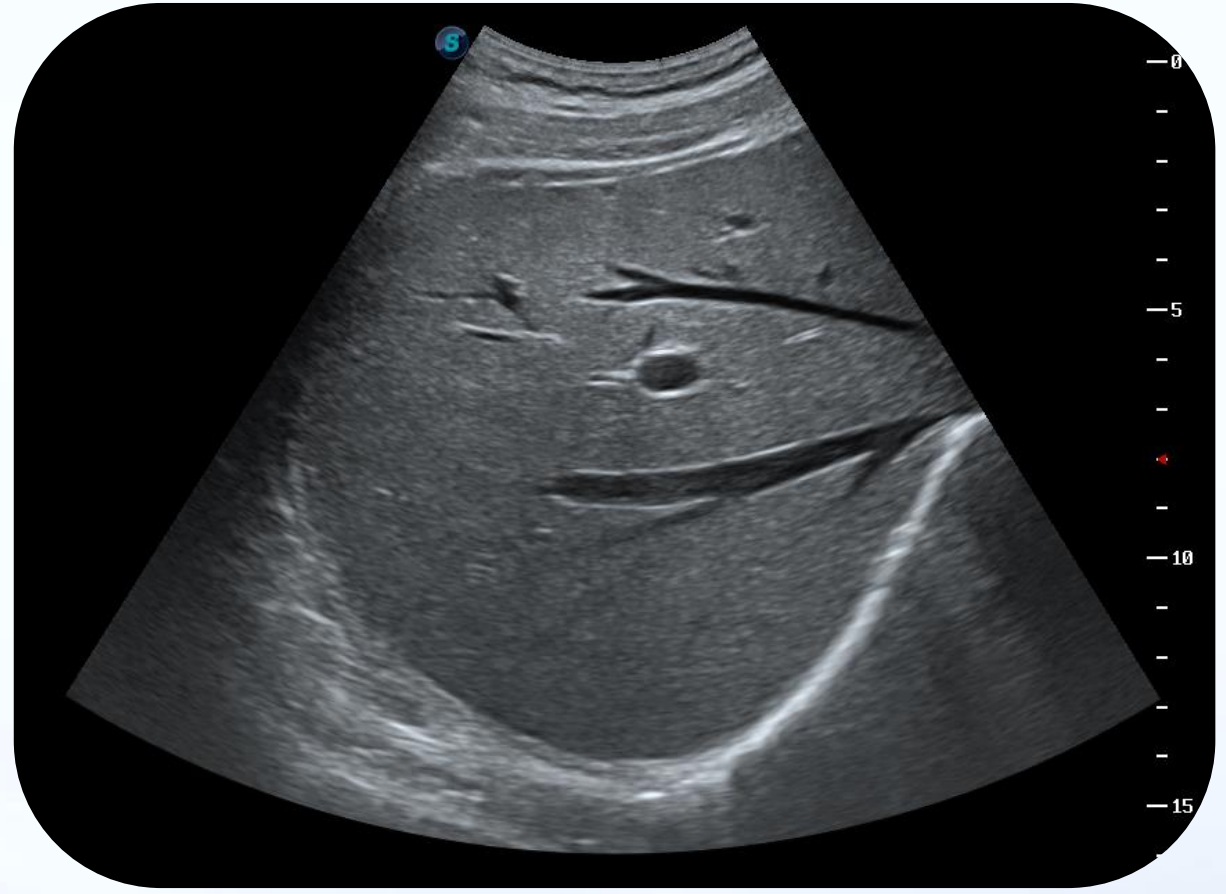


C1-6





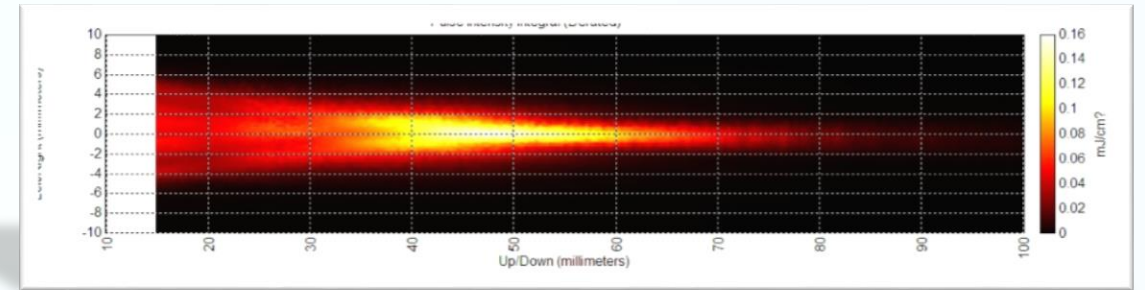
μ -Scan off



μ -Scan on

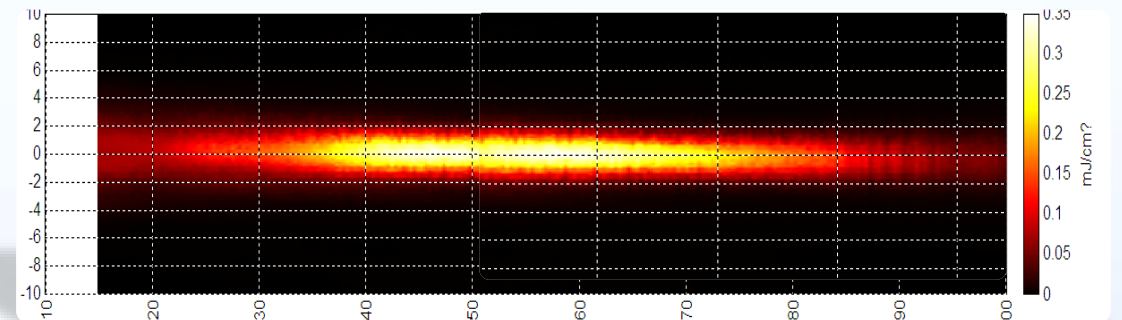
- Traditional US Beam

- Limited focus area within one image;



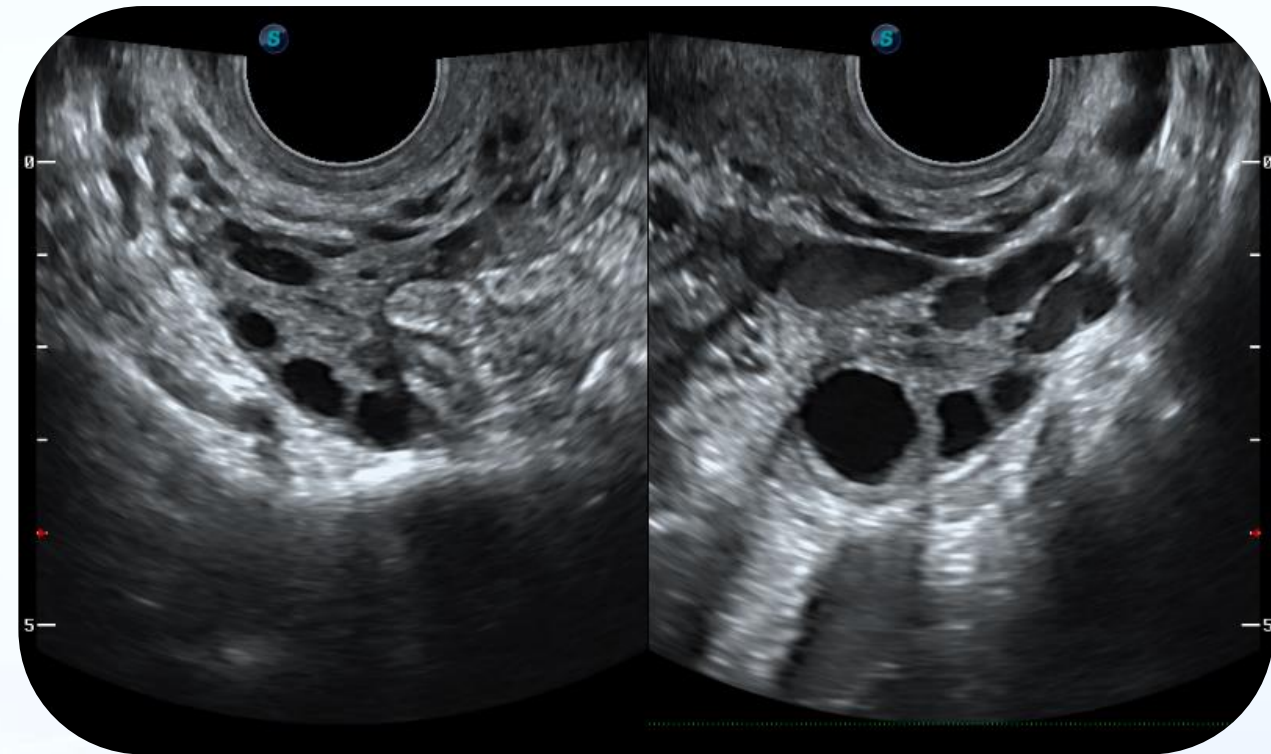
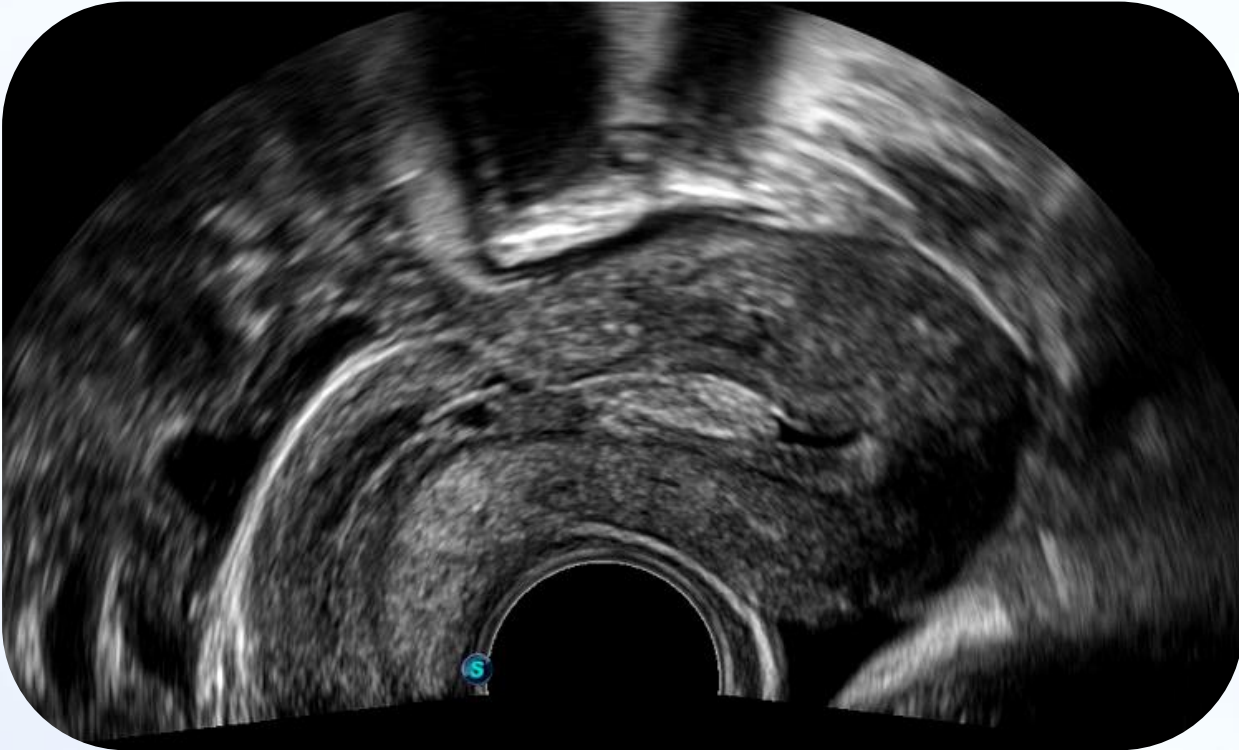
- C-Field Beam Former

- Dynamic continuous focusing
- Better out-of-focus image resolution and penetration



C-Field Beam

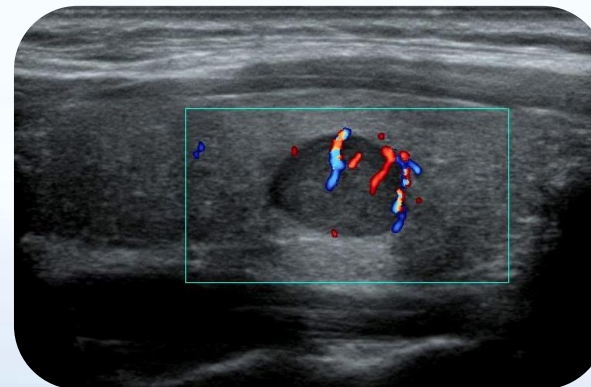
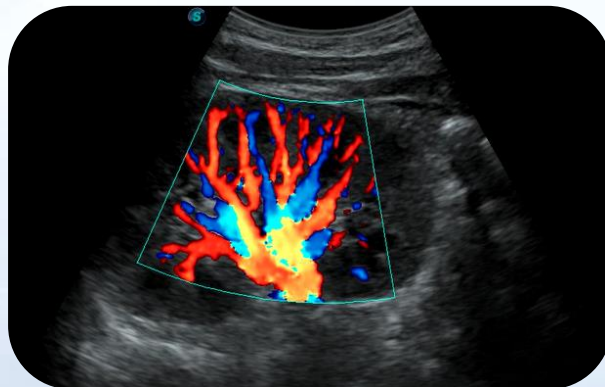
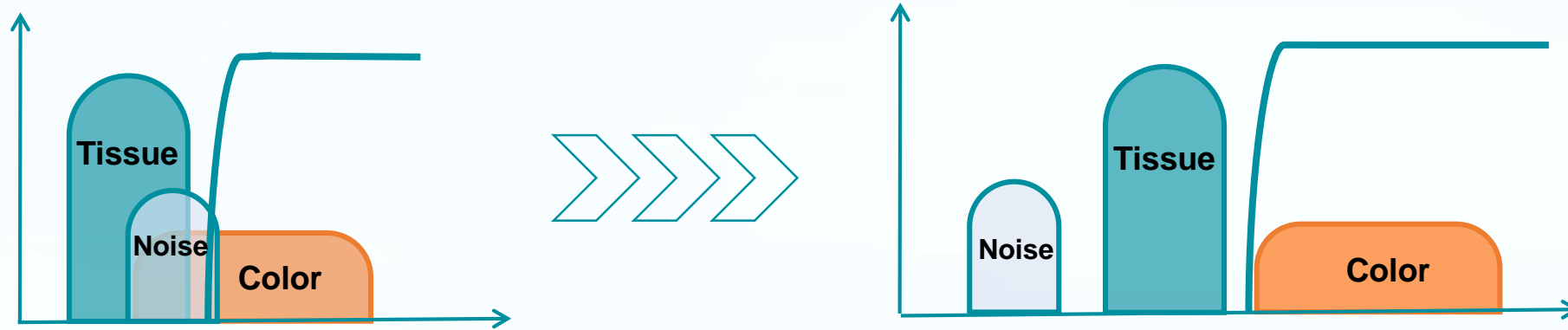
SonoScape



Excellent image resolution and penetration

Smart Dynamic Color

- Show better color performance by adaptively matching technology
- Improve the color sensitivity for Lower velocity



CONTENTS



1



Exceptional Mobility with
Compact Design

2



Consistent Quality
Performance Across
Applications

3



Tailored Solutions For
Various Applications

Tailored Solutions For Various Applications

SonoScape



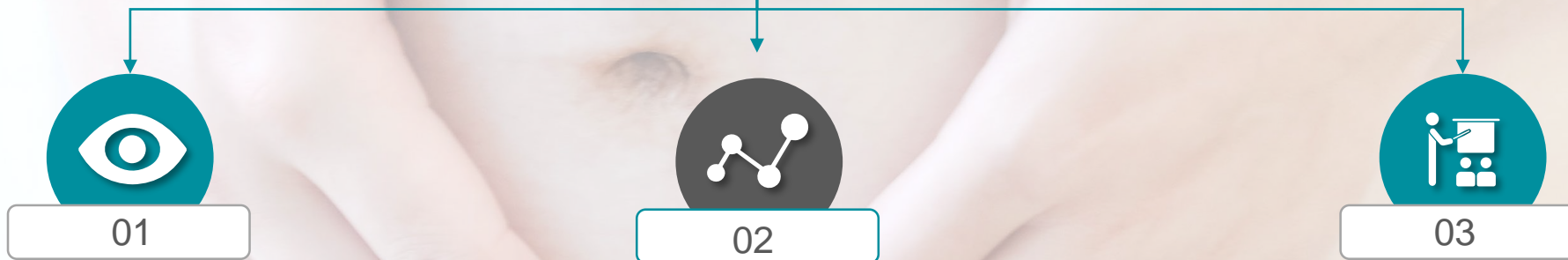
OB/GYN



RADIOLOGY



CARDIOVASCULAR



- S-Live
S-Live silhouette
S-Depth
S-Skeleton Depth
Multi-Slice

- Multi-Slice
C-Plane
AVC Follicle
Auto face
Auto NT

- S-Guide

S-Live



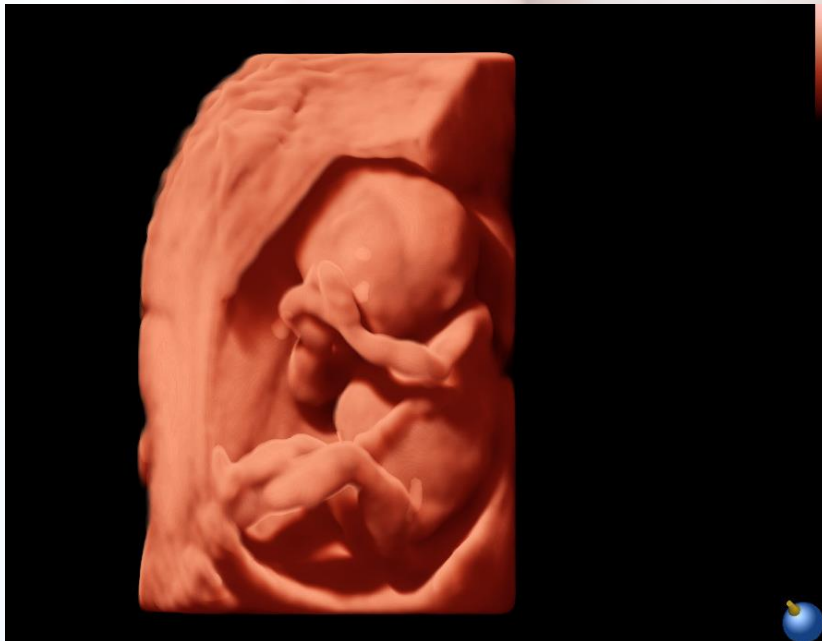
Support a virtual light source



More realistic Shadows



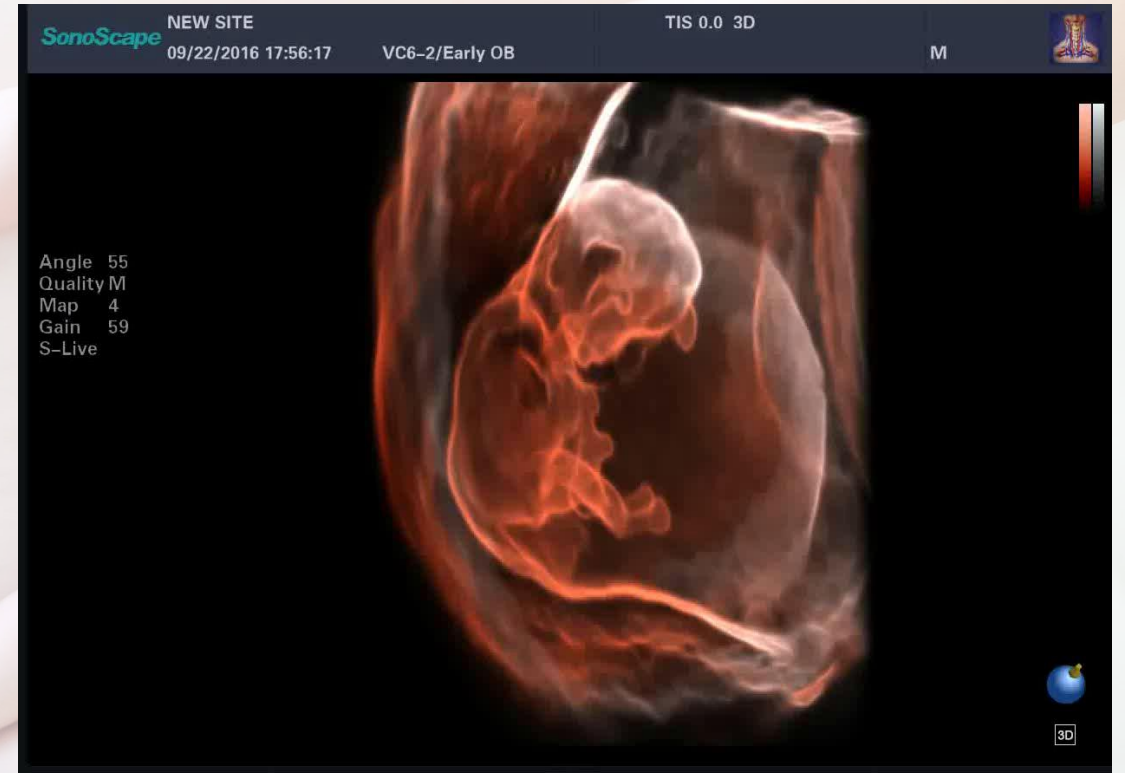
More information visible



S-Live



S-Live silhouette

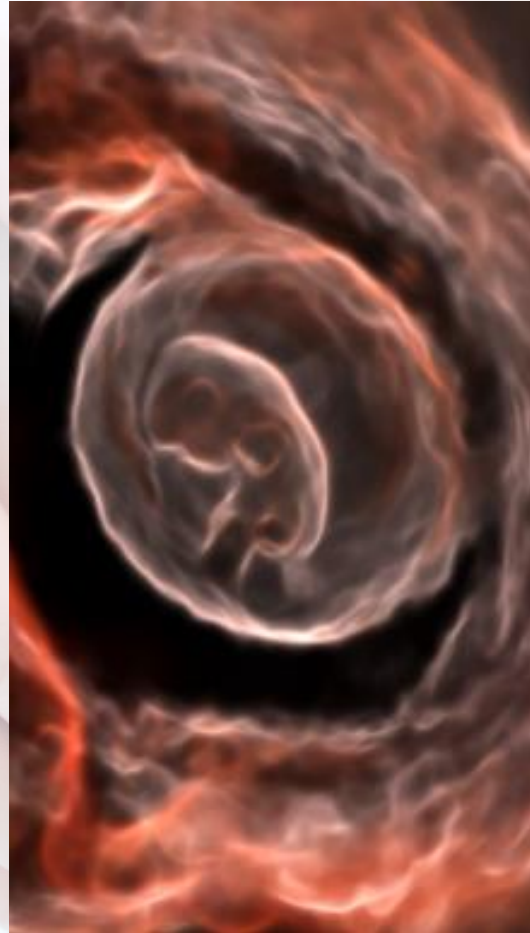


Increase the border of tissue

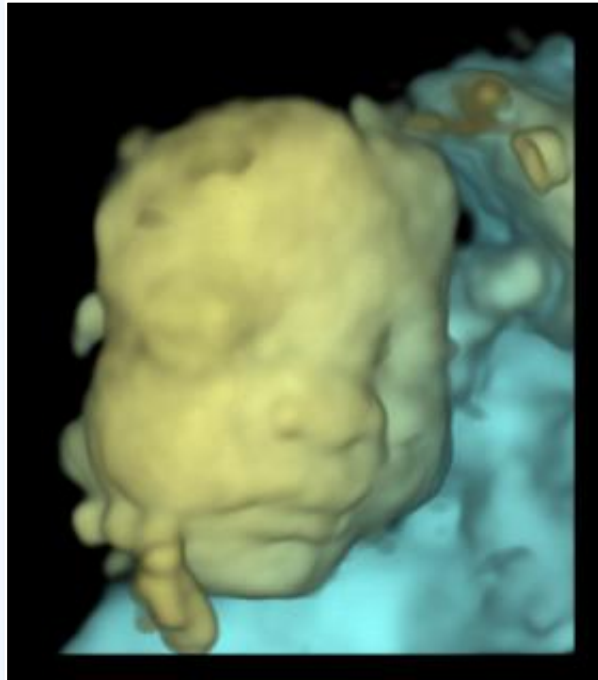


Observe the inner structure without edit

S-Live silhouette



S-Depth



Various color map show the different depth;

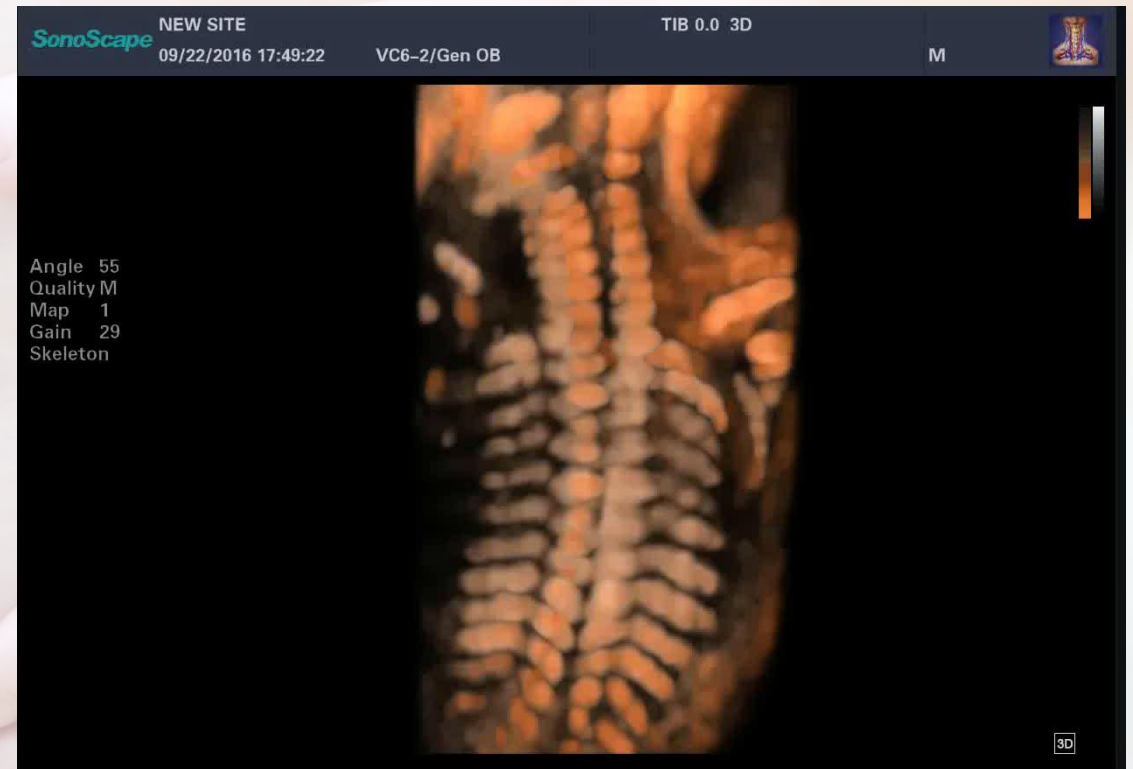


Convenient to judge the position of the organization along the depth direction

S-Skeleton Depth

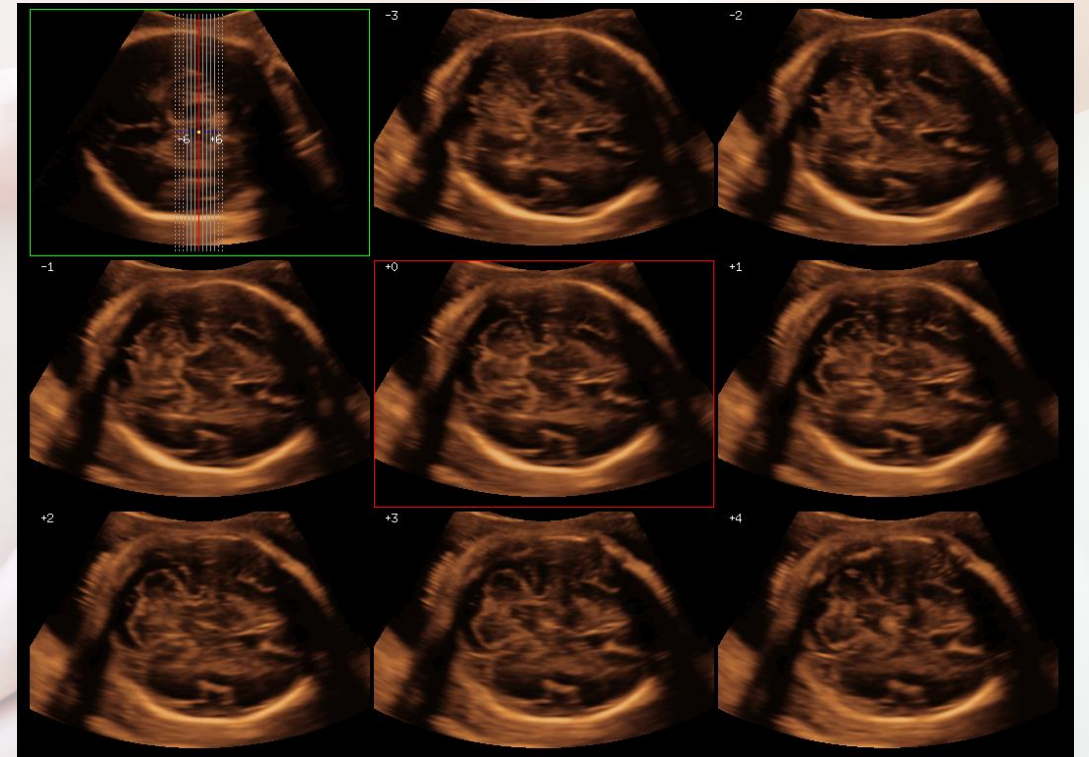


- Removed soft tissue automatically, display skeleton more obviously
- Added depth information, display more realistic



Multi-Slice

- A** Stack of parallel 2D images in different direction from 3D volume data
- B** Easy to interpret anatomical structure
- C** Make the diagnosis more standardized



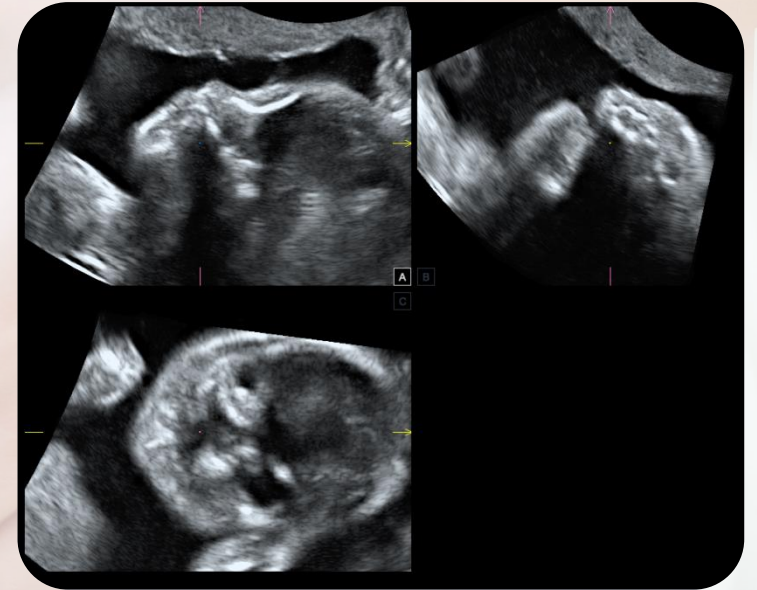
C-Plane

A

Conveniently observe the plane which are not easy to be obtained

B

Provide more abundant and intuitive information

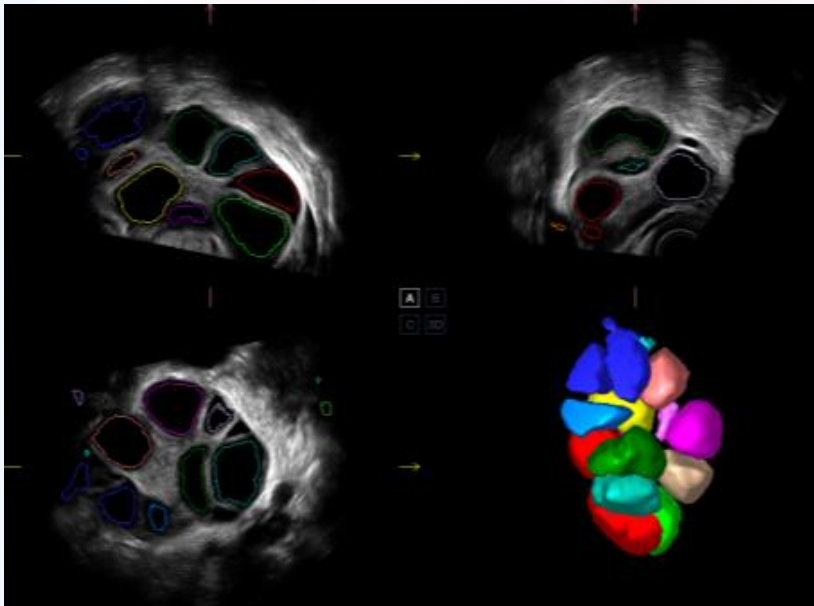


Auto face

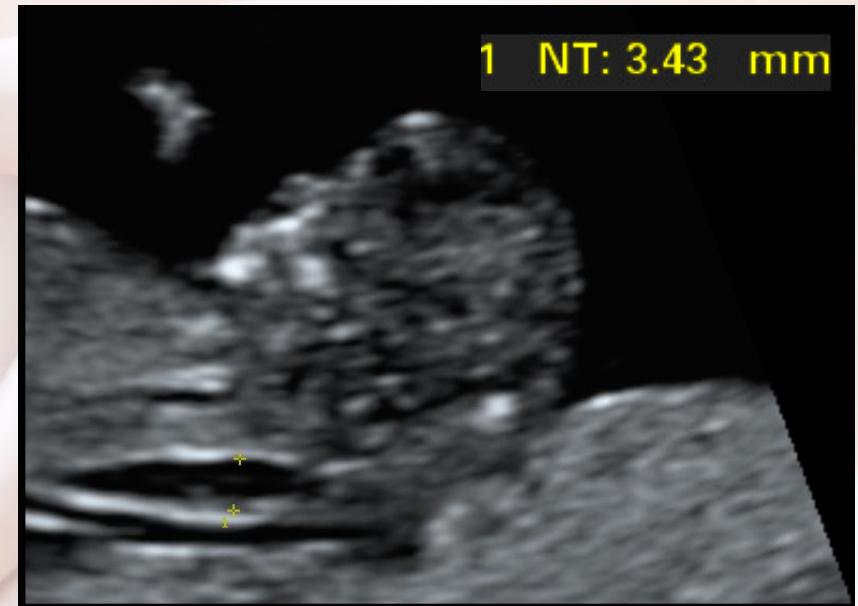


AVC Follicle

(Advanced Volume Calculation)



Auto NT



- Improve diagnostic efficiency
- Reduce dependence on operator
- Improve diagnostic confidence.

S-Guide



Standard planes



Scanning reminder

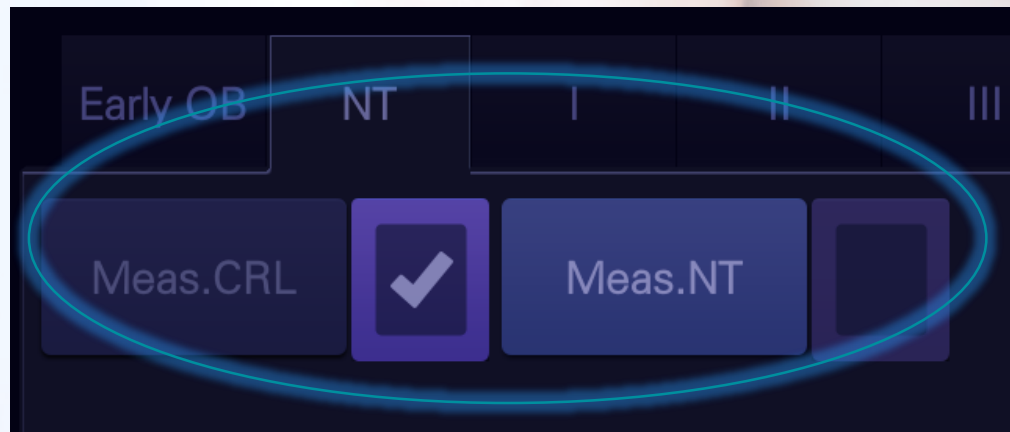


Improve efficiency



Increase confidence

S-Guide



Tailored Solutions For Various Applications

SonoScape



OB/GYN

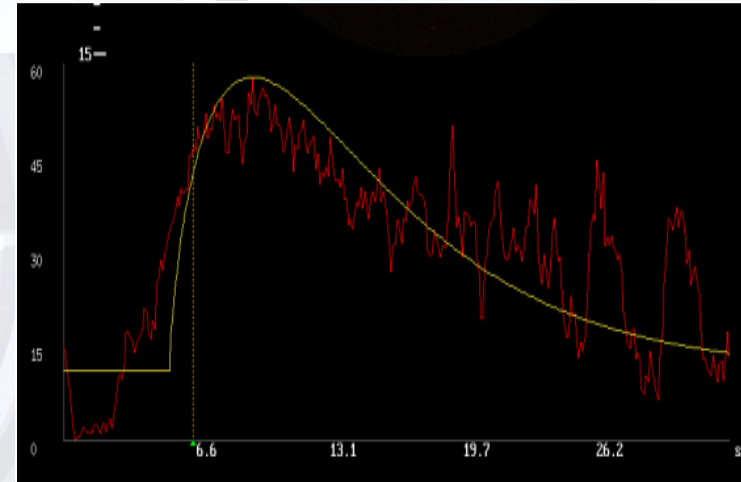


RADIOLOGY



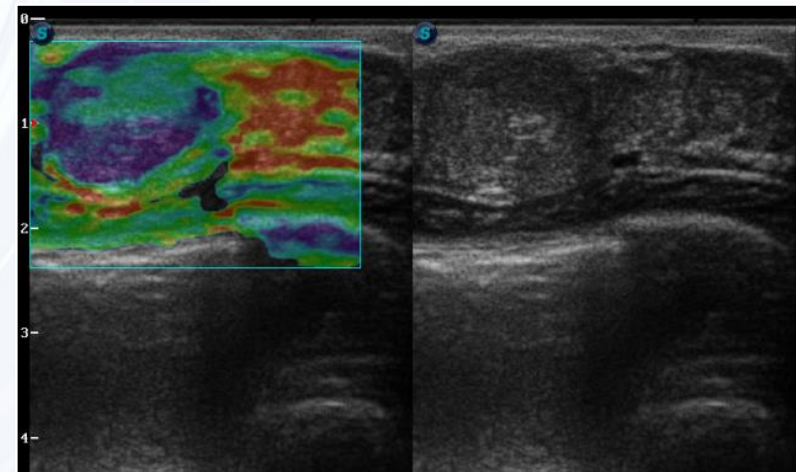
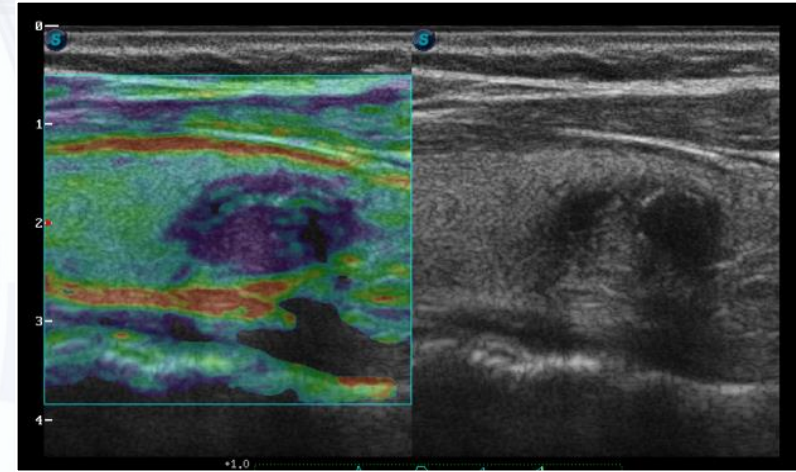
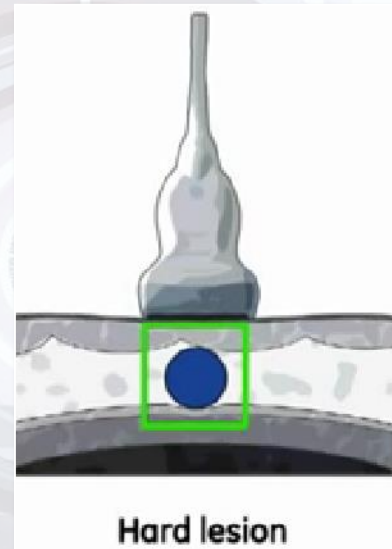
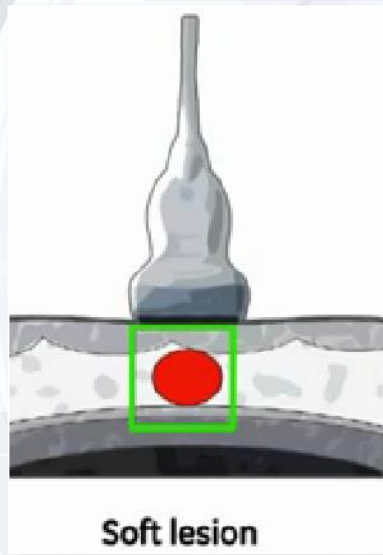
CARDIOVASCULAR

Contrast Imaging



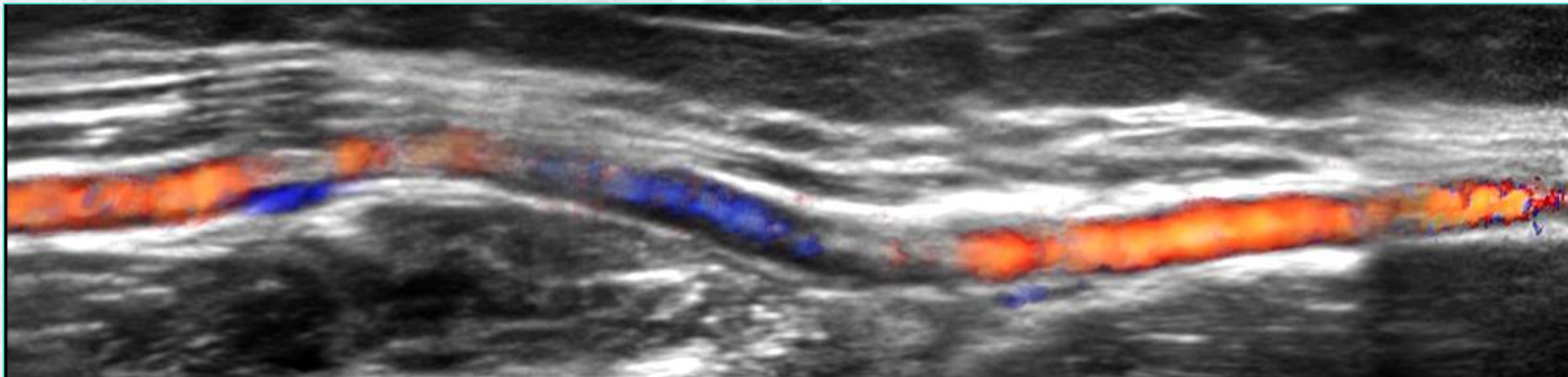
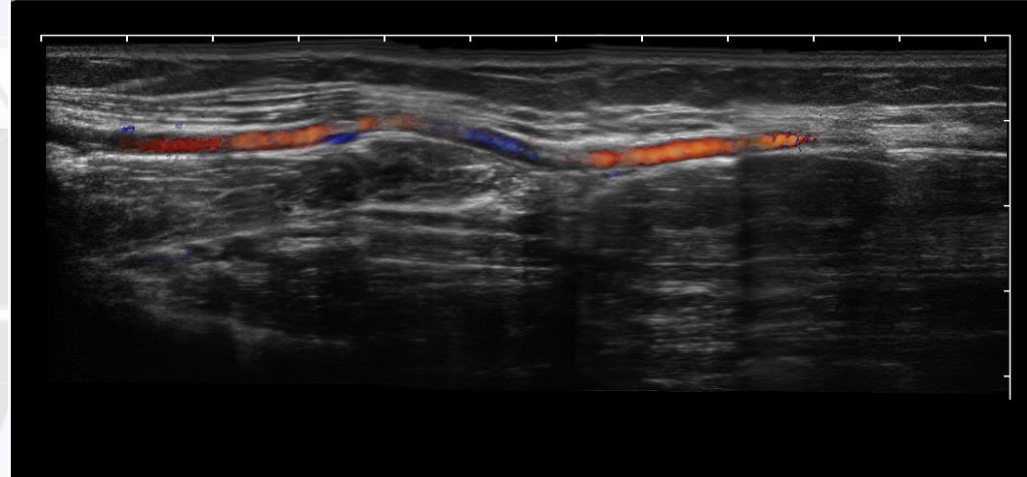
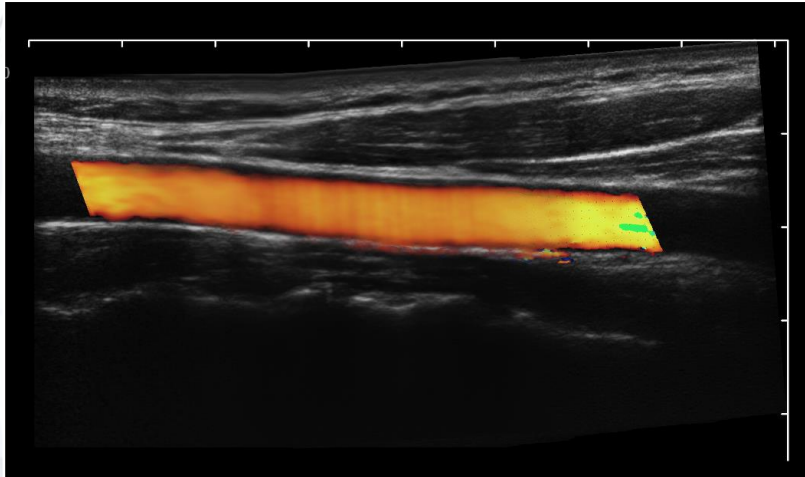
- Easy to identify lesion
- Simultaneous view and timer
- Available on: 3C-A, C1-6

C-xlasto Imaging



- Quick access to the position
- Rapid calculation of Strain Ratio
- Intelligent Strain Curve
- Available on: L742,12L-A,3C-A,6V3,C613, EC9-5,BCC9-5

Real-time Color Panoramic



- Available on: L742,12L-A,3C-A,C1-6,6V3, 6V3A,C613,VE9-5,VC6-2 (only L742,12L-A support color panoramic)



OB/GYN

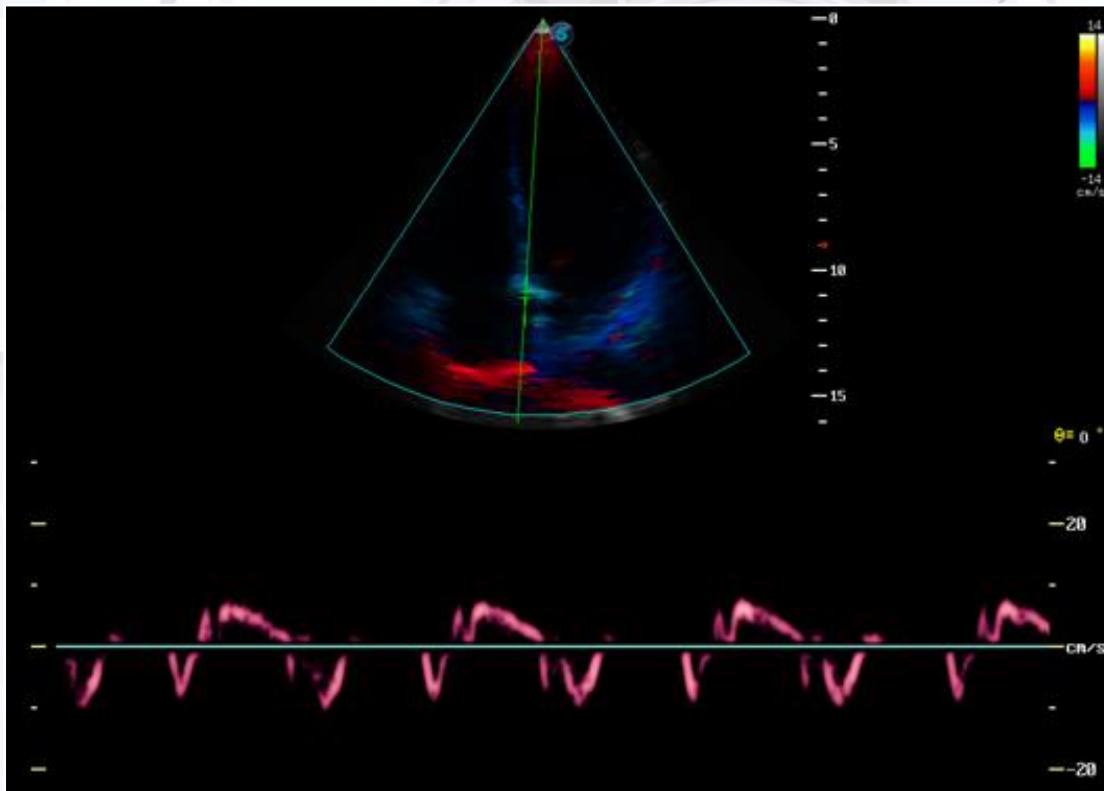


RADIOLOGY



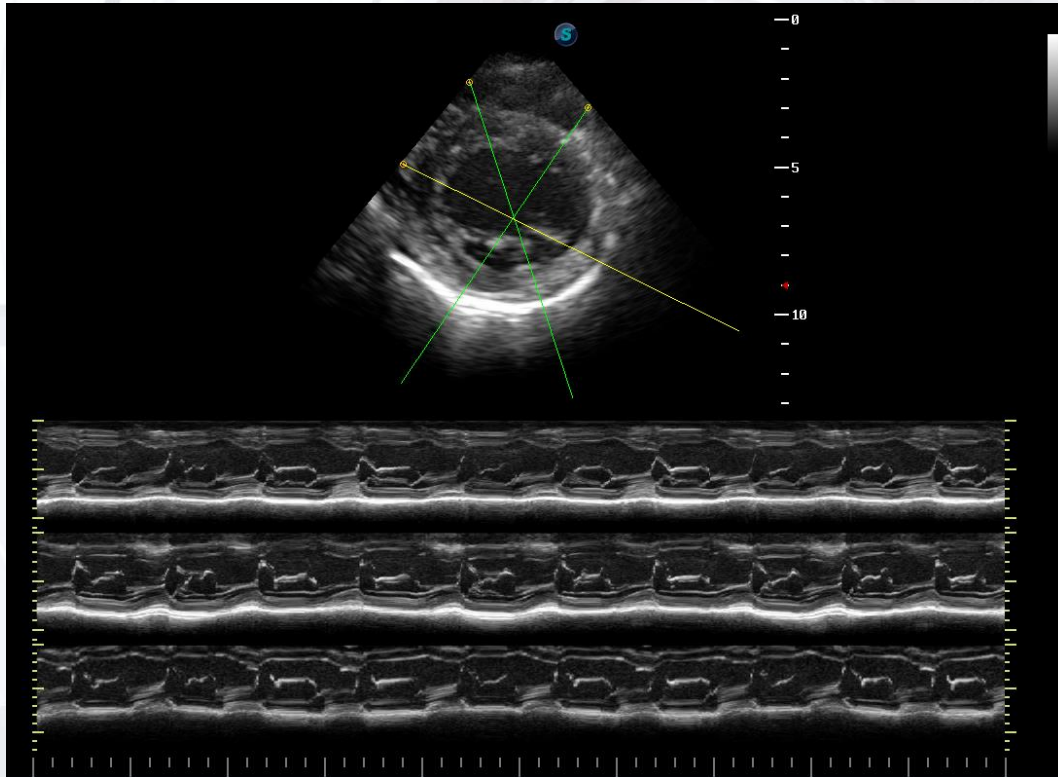
CARDIOVASCULAR

Tissue Doppler Imaging



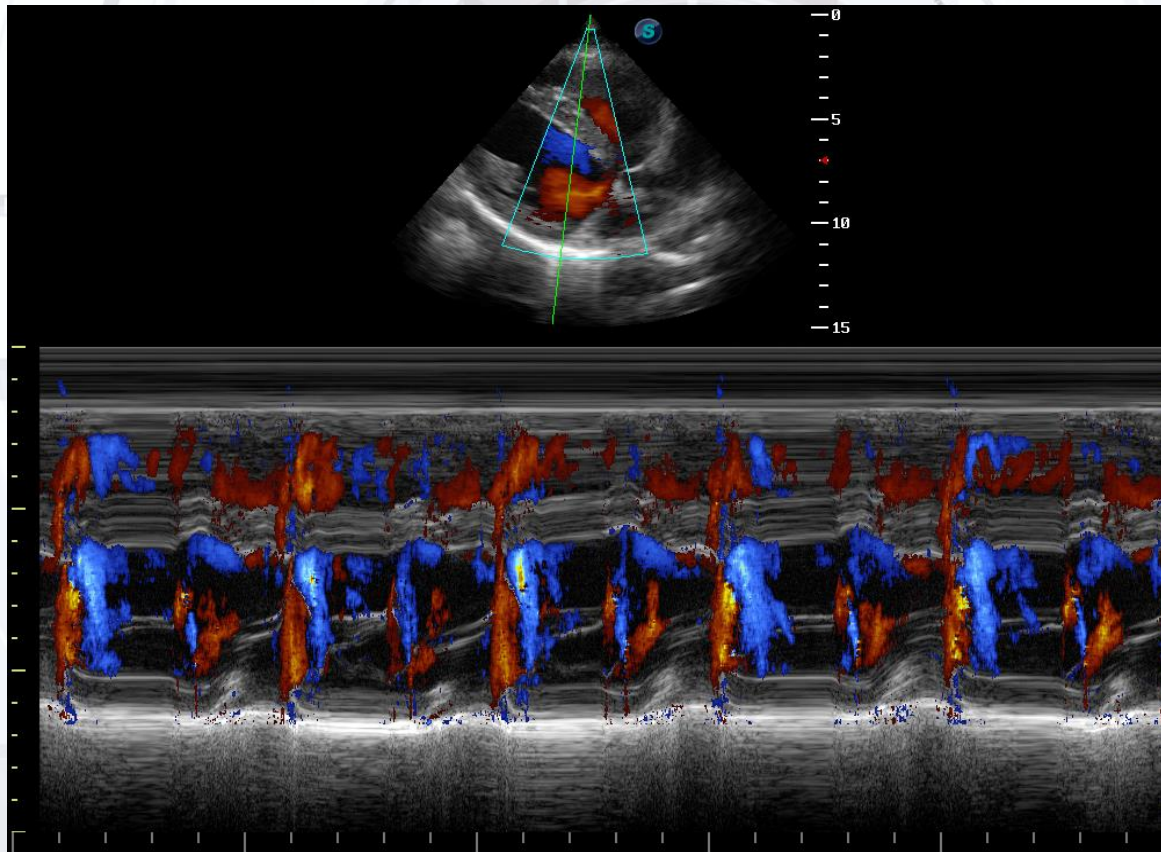
- Show myocardial motion by color code
- Quantitative analysis of regional myocardial motion

Anatomic M Mode



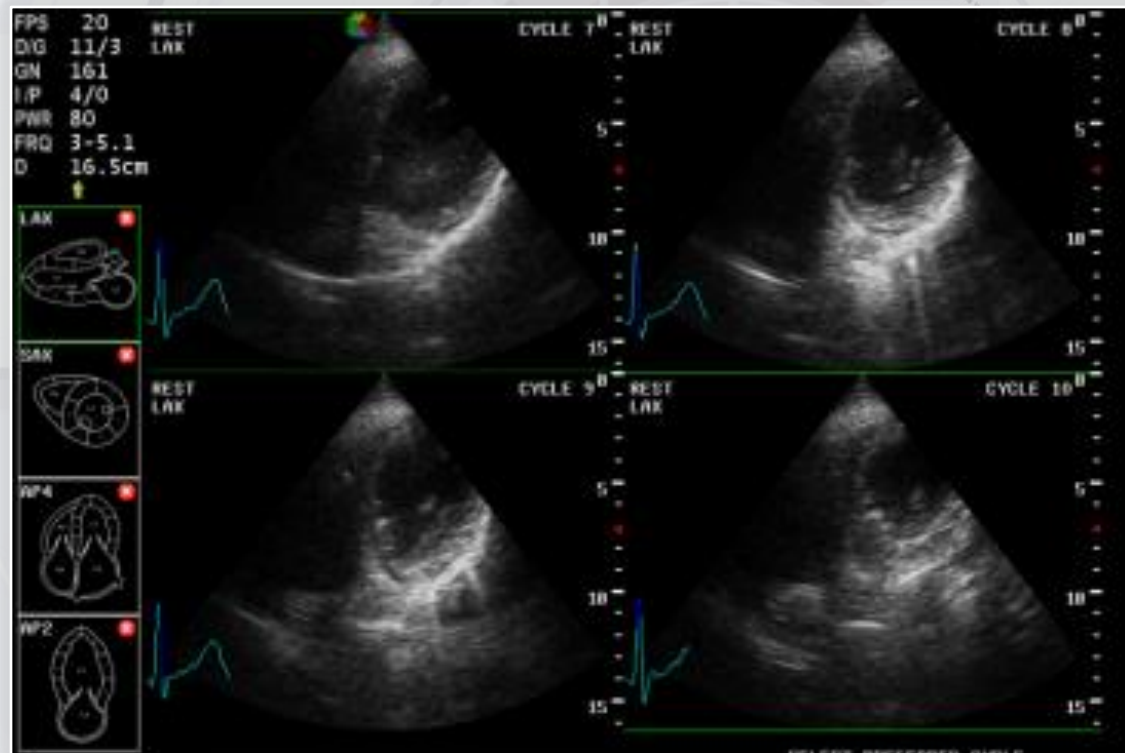
- Up to 3 M-Mode lines displayed simultaneously;
- Easy to get better images for difficult patient

Color M Mode



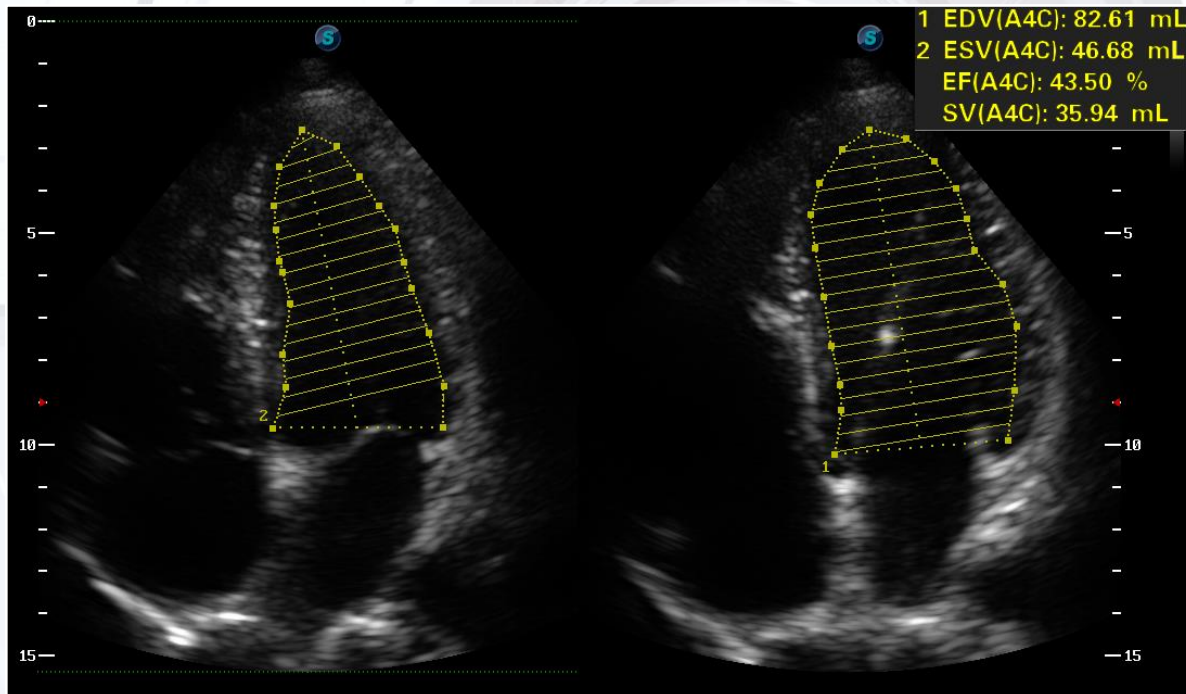
- Provide the direction of flow on M mode

Stress Echo



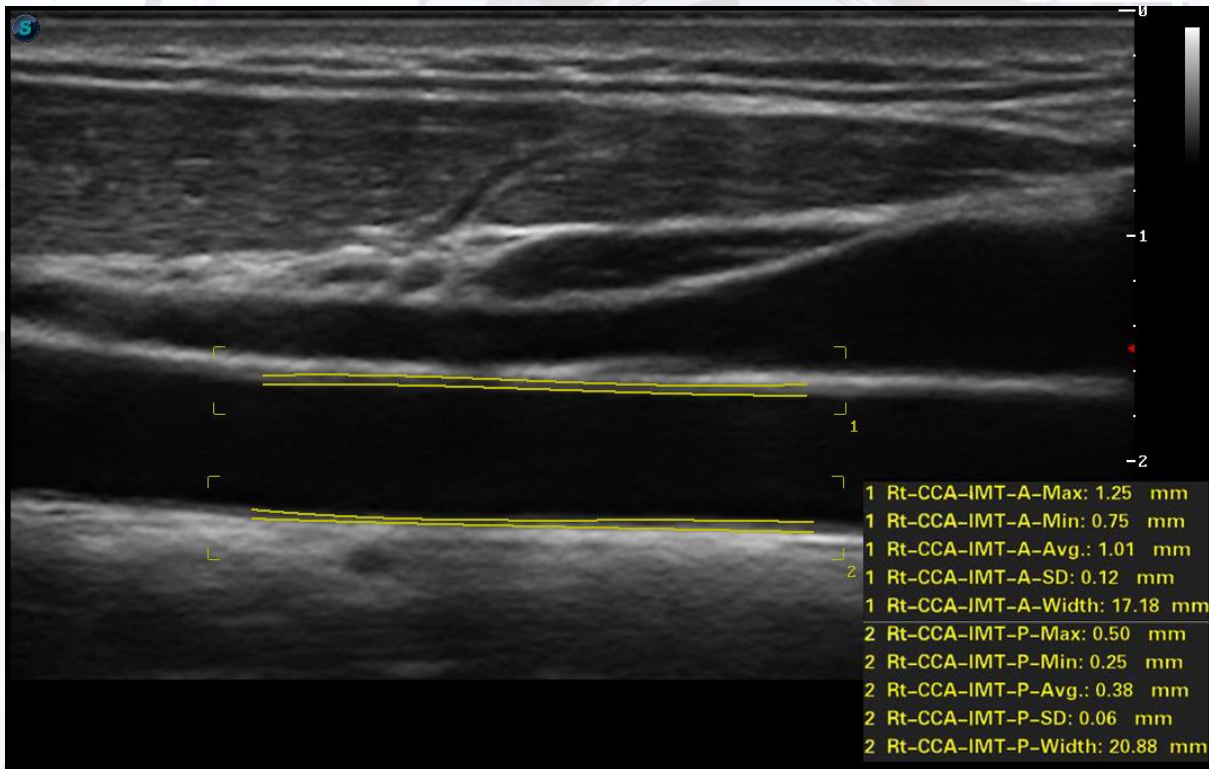
- Versatile exercise and pharmacologic protocols;
- Wall motion scoring and reporting.

Auto EF



- Automatic calculate LV function through auto trace
- Greatly improved the productivity of LV measurement
- Improved the efficiency ,accuracy and repeatability

Auto IMT



- Automatically identify the vessel intima & media structure and measurement the thickness
- Improved the efficiency ,accuracy and repeatability
- No operator dependent



Mobility

- ✦ slim with battery and 5 probe connector



Excellent image quality

- ✦ Excellent 2D image for high frequency probe
- ✦ High color flow sensitivity



Advanced rendering mod

- ✦ S-live silhouette
- ✦ S-skeleton depth

SonoScape

Thank
you

